



PARKING
PUBLIC RIGHT
OF WAY

BEACH



OKOLANI DRIVE

Phase II

Phase I

Phase III

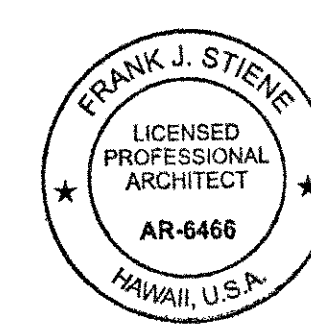
HALEA DRIVE

Frank J. Stiene Group

Architecture

DWG: A-3 WAILEA EKAHI CONDOMINIUM RESORT
SITE PLAN

TO
TENNIS CLUB
&
GOLF CLUBHOUSE
(1/2 mile)



THIS DWG. WAS PREPARED BY ME OR
UNDER MY SUPERVISION.
Frank J. Stiene 10/26/01
Frank J. Stiene Group, Inc.
Architects
3147 N. Nohō Lō'ihī Way
Wailea, HI 96753-7771



WALEA ALANUI

SEALED ROAD OF PARKING COMPLEX
 STA. 0+00 TO 0+100
 8558.14' 175.07' A
 0+00 STN.

- FIRE HYDRANT CONNECTION MATERIALS
- 6" DIA. PIPES
 - 6" DIA. VALVES
 - 6" DIA. VALVE BOX & COVER
 - FIRE HYDRANT ASSEMBLY (FOR VALVE BOX, WOODS, 10.5')
 - 6" DIA. BULKHEAD
 - FIRE BLENCH AS REQUIRED

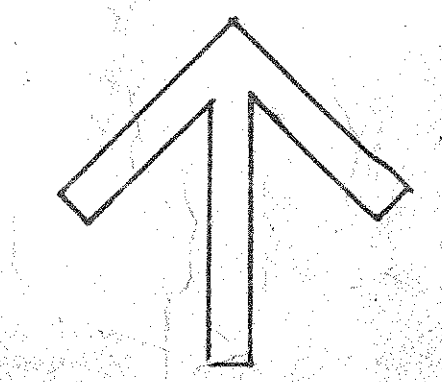
Ⓢ ADDITIONAL WORK BY BEING CONSTRUCTION

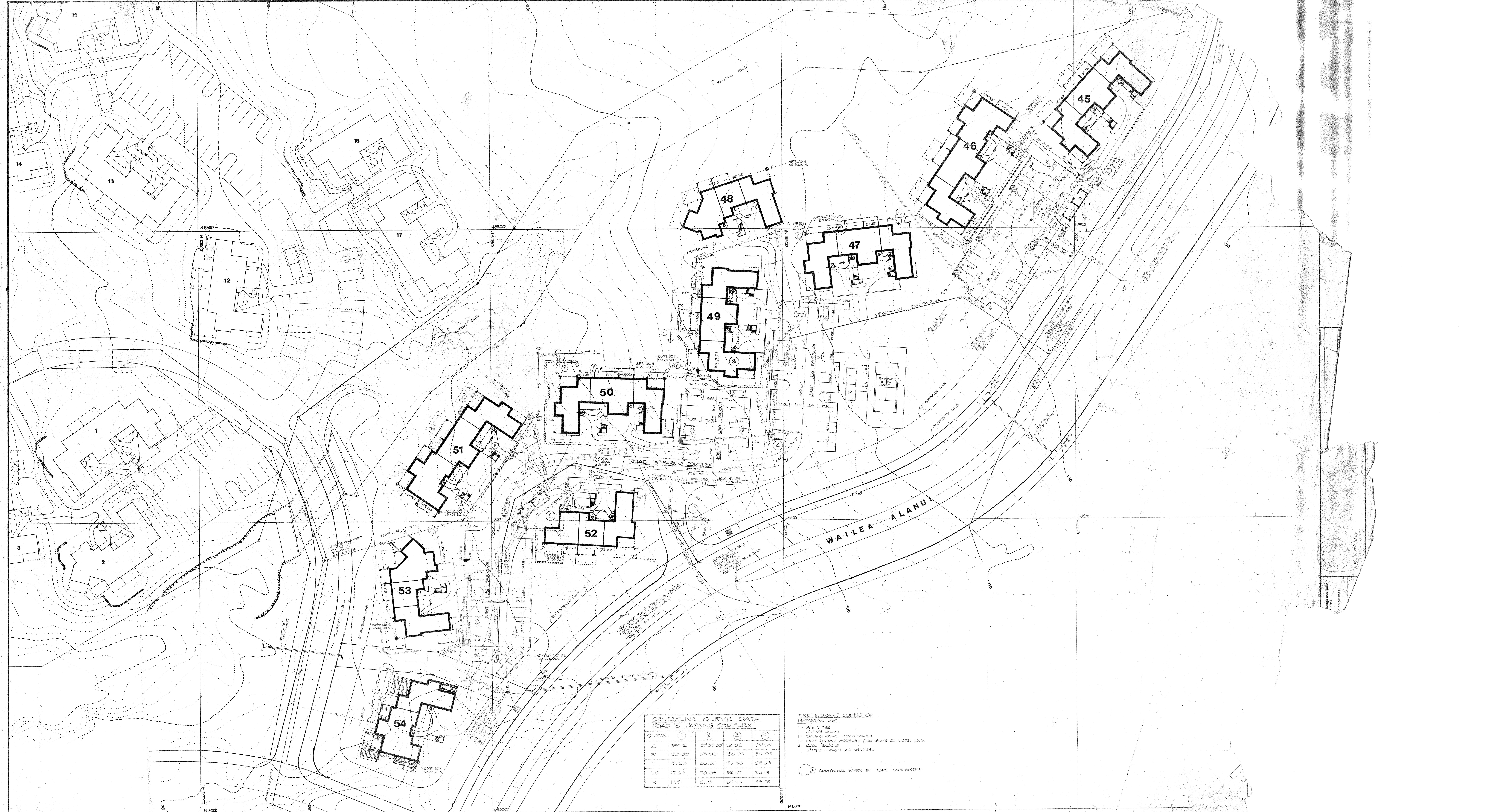
CENTERLINE CURVE DATA
 ROAD OF PARKING COMPLEX

CURVE	(1)	(2)	(3)
Δ	0°51'28"	7°40'37"	47°10'20"
R	455.87	455.87	70.00
T	30.86	30.75	20.40
LC	78.55	61.87	39.01
C	78.05	61.42	37.51

Engineered Housing, Design and Drive
 1200 S. Ocean Street
 Suite 100, Honolulu, HI 96813

Wailea





**CENTERLINE CURVE DATA
ROAD 'B' PARKING COMPLEX**

CURVE	(1)	(2)	(3)	(4)
Δ	94° 02'	101° 34' 30"	131° 02'	78° 55'
←	20.30	55.33	100.00	50.05
T	21.03	54.55	50.00	20.03
LC	17.64	73.04	58.27	30.15
LS	17.01	37.01	52.45	25.70

- FIRE HYDRANT CONNECTION MATERIAL LIST**
- 1 - 3" x 4" TEE
 - 1 - GATE VALVE
 - 1 - BUILDING WHORL 30" x COVER
 - 1 - FIRE HYDRANT ASSEMBLY (FOR WAIPA CO. MODEL 12.5)
 - 2 - 20' x 20' BRICKS
 - 2" PIPE - ASBEST AN REQUIRED
- Ⓧ ADDITIONAL WORK BY FONG CONSTRUCTION.

Robert K. Roney
 No. 14111
 State of Hawaii



KIHEI ROAD

WAILEA ALANUI

REVISED 7/11/75
 ADDED STORM DRAIN 'G'
 PART OF STORM DRAIN 'G' QUAD 2
 DELETED STORM DRAIN 'G' SWALE
 AVOID TO BE C.B. ELEVATIONS

CENTERLINE CURVE DATA
 ROAD 'A' PARKING COMPLEX

CURVE	(1)	(2)	(3)	CURVE	(1)	(2)
Δ	50° 14'	57° 50' 30"	88° 30'	Δ	88° 30' 00"	47° 45'
R	42.00	42.00	65.40	R	46.00	42.00
T	14.76	21.03	23.41	T	14.58	17.23
LC	18.01	33.84	43.07	LC	21.00	30.00
LC	36.02	67.68	86.14			

CENTERLINE CURVE DATA
 ROAD 'B' #1

CURVE	(1)	(2)	(3)
Δ	88° 30' 00"	47° 45'	
R	46.00	42.00	
T	14.58	17.23	
LC	21.00	30.00	

FIRE HYDRANT CONNECTION
 MATERIAL LIST
 1. 1.5" x .08" FIBERGLASS
 2. 6" GATE VALVE
 3. 6" GATE VALVE BOX & COVER
 4. FIRE HYDRANT CONNECTION (6" VALVE CO. MODEL 10.5)
 5. 6" GATE VALVE
 6. PIPE - SIGHT AS NOTED

TYPICAL EDGE
 PATH ELEVATION
 CENTERLINE

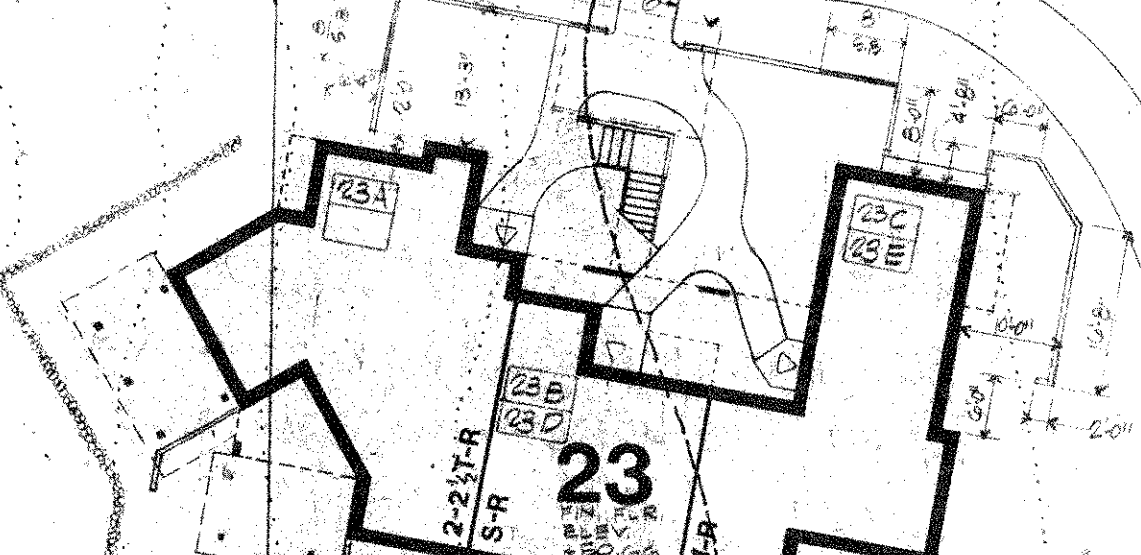
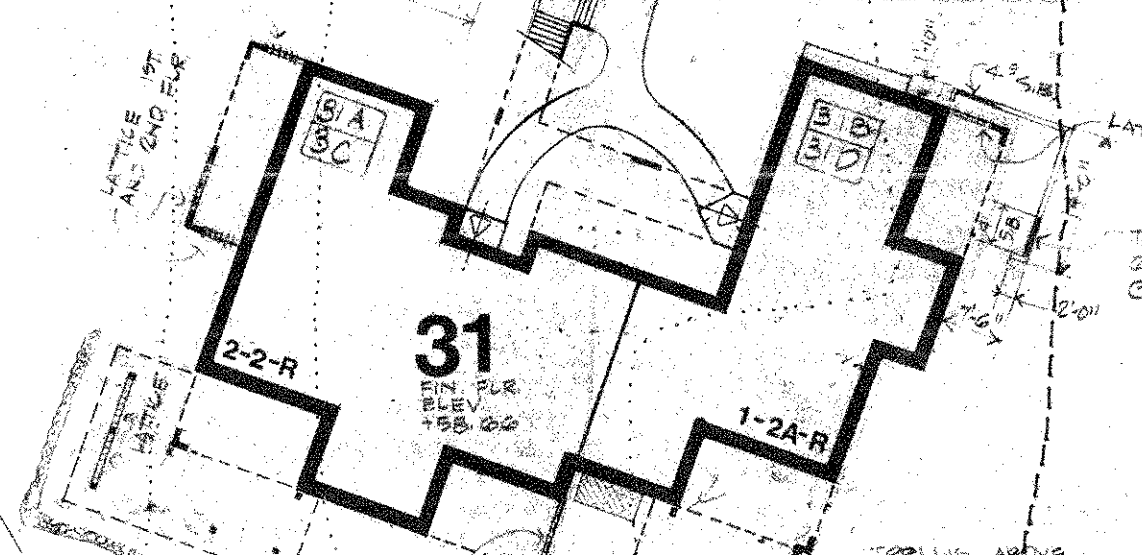
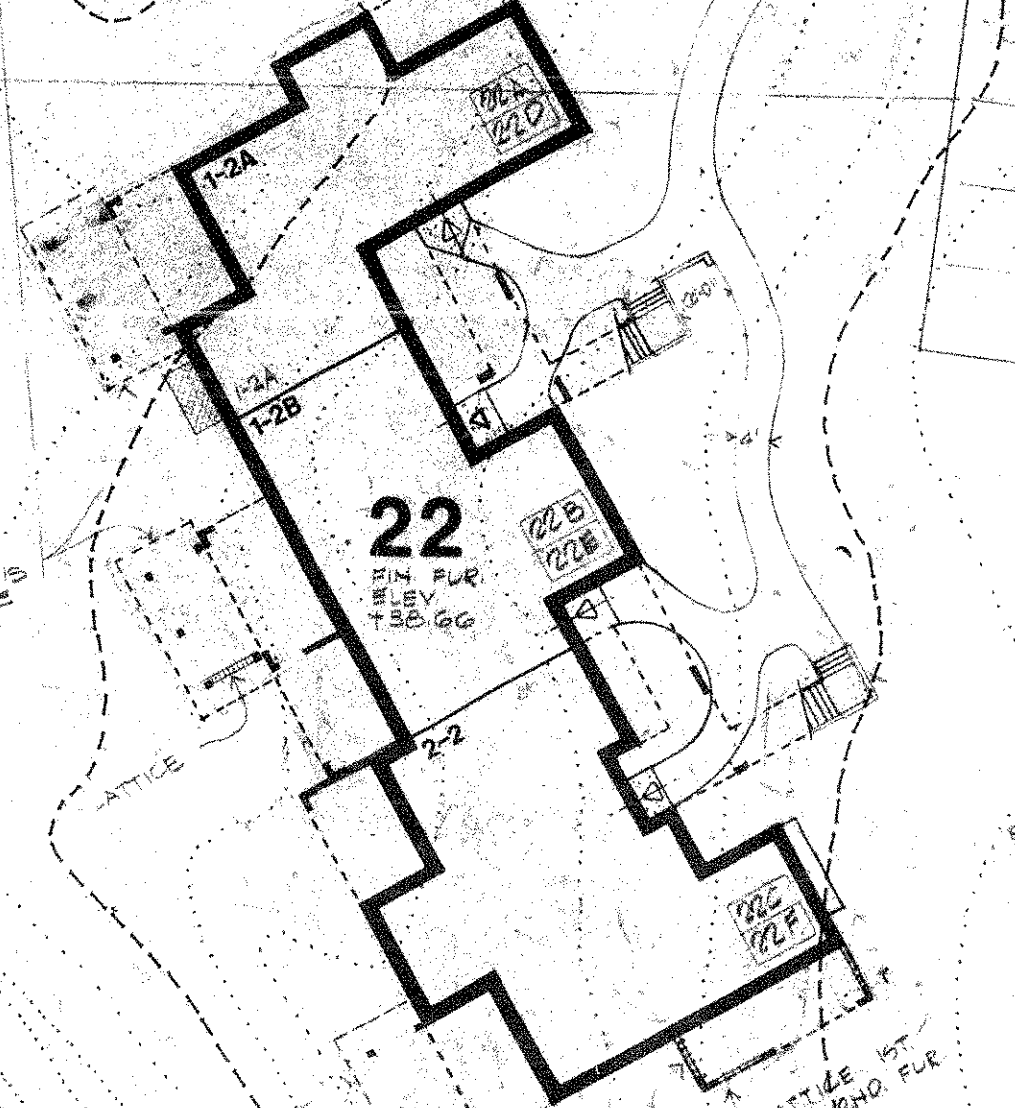
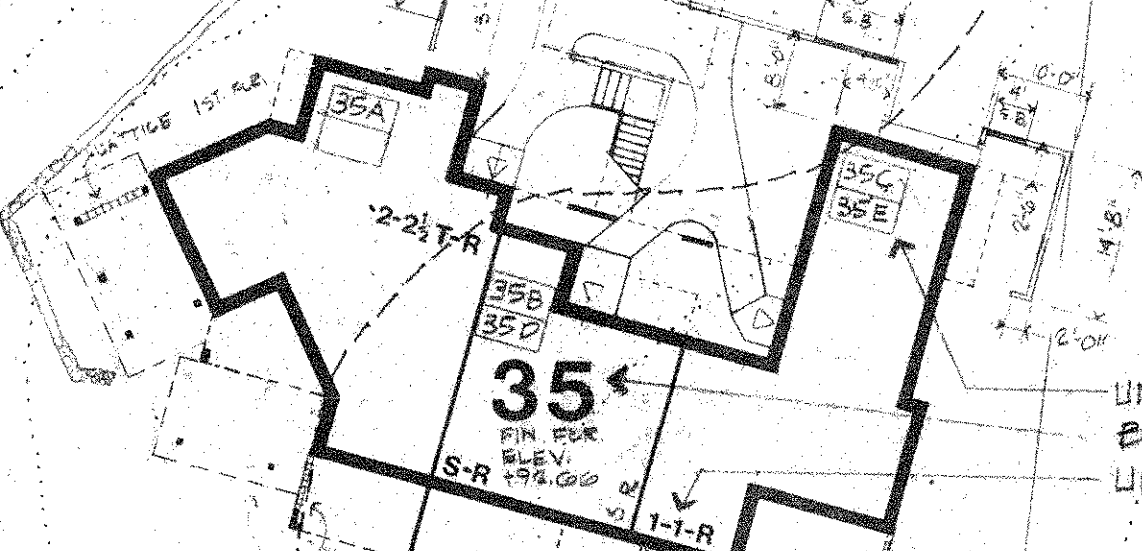
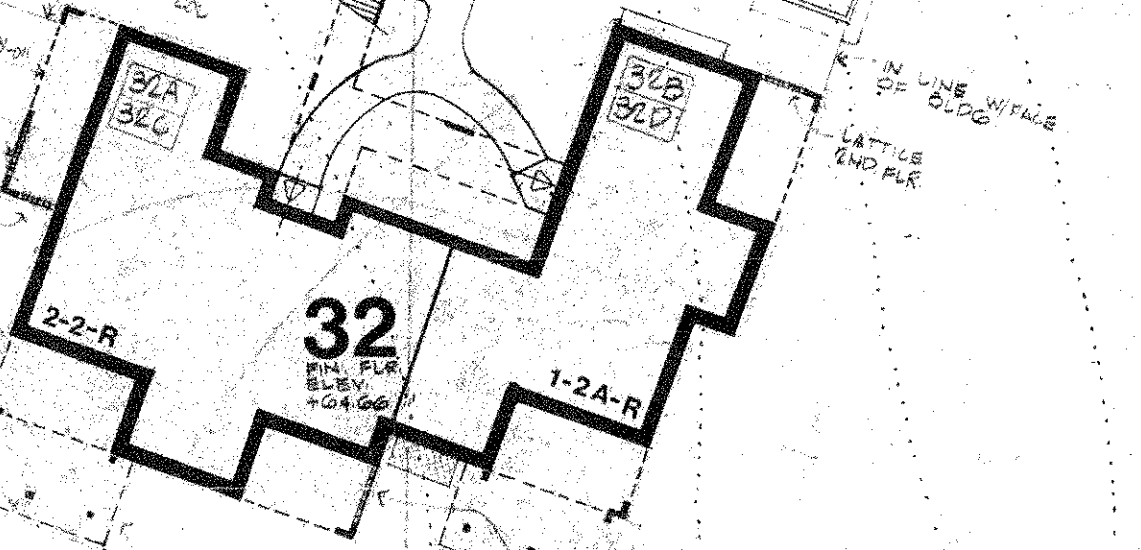
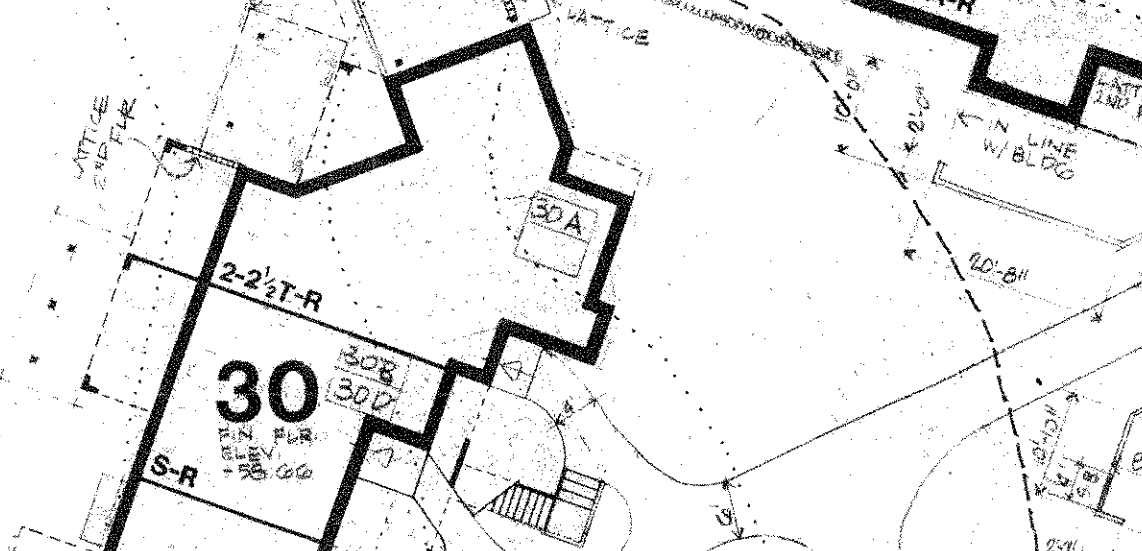
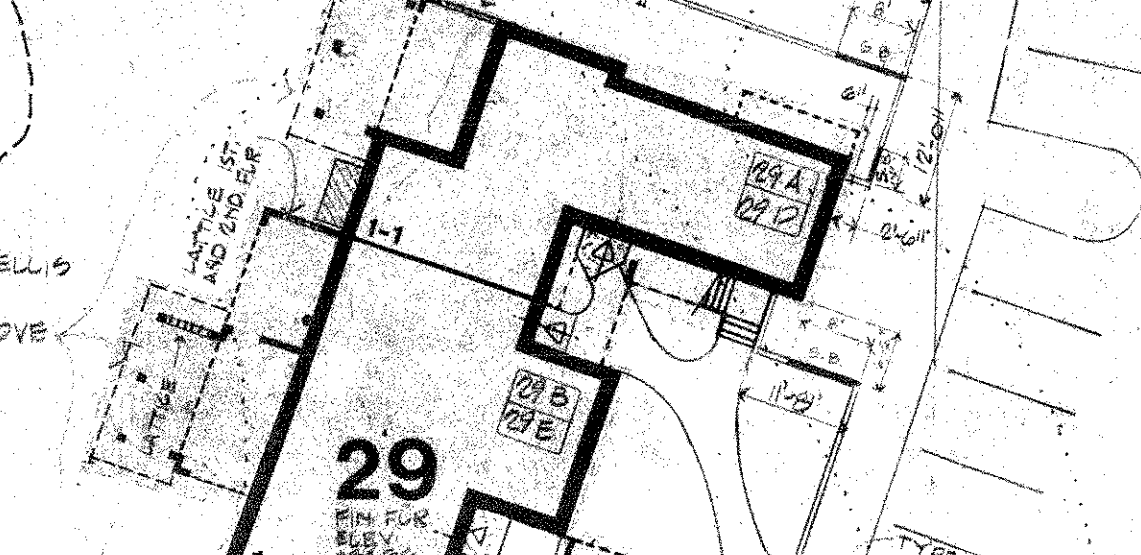
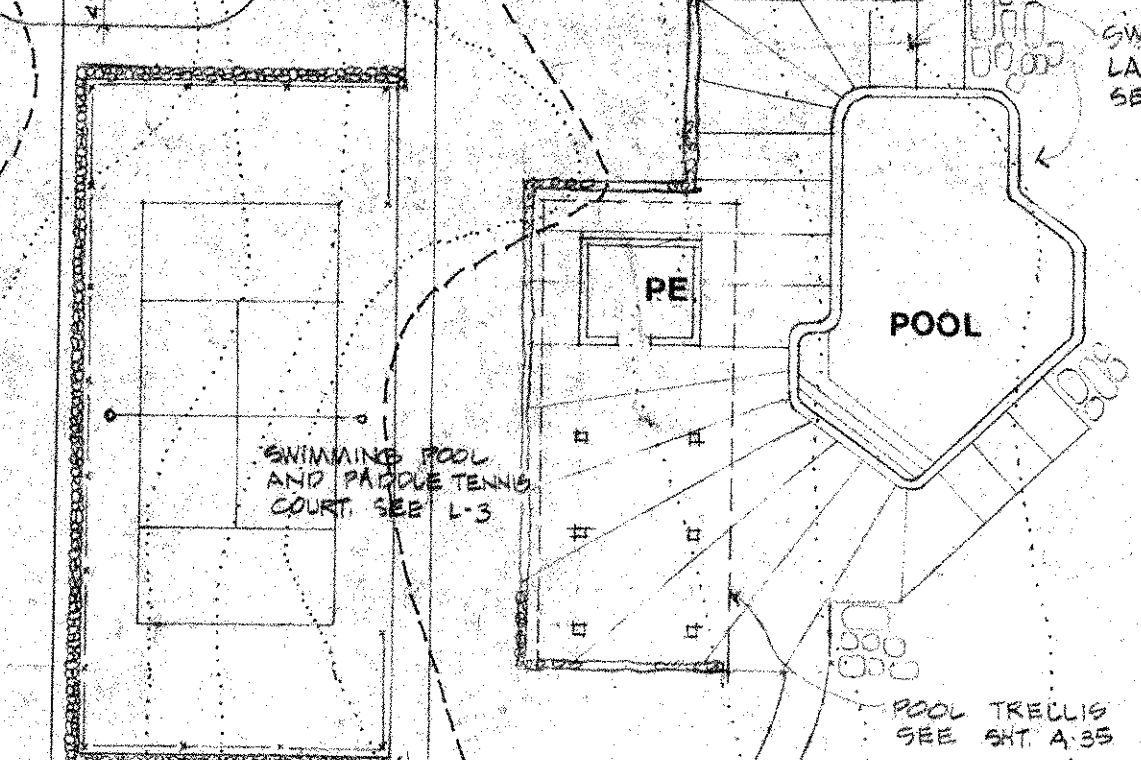
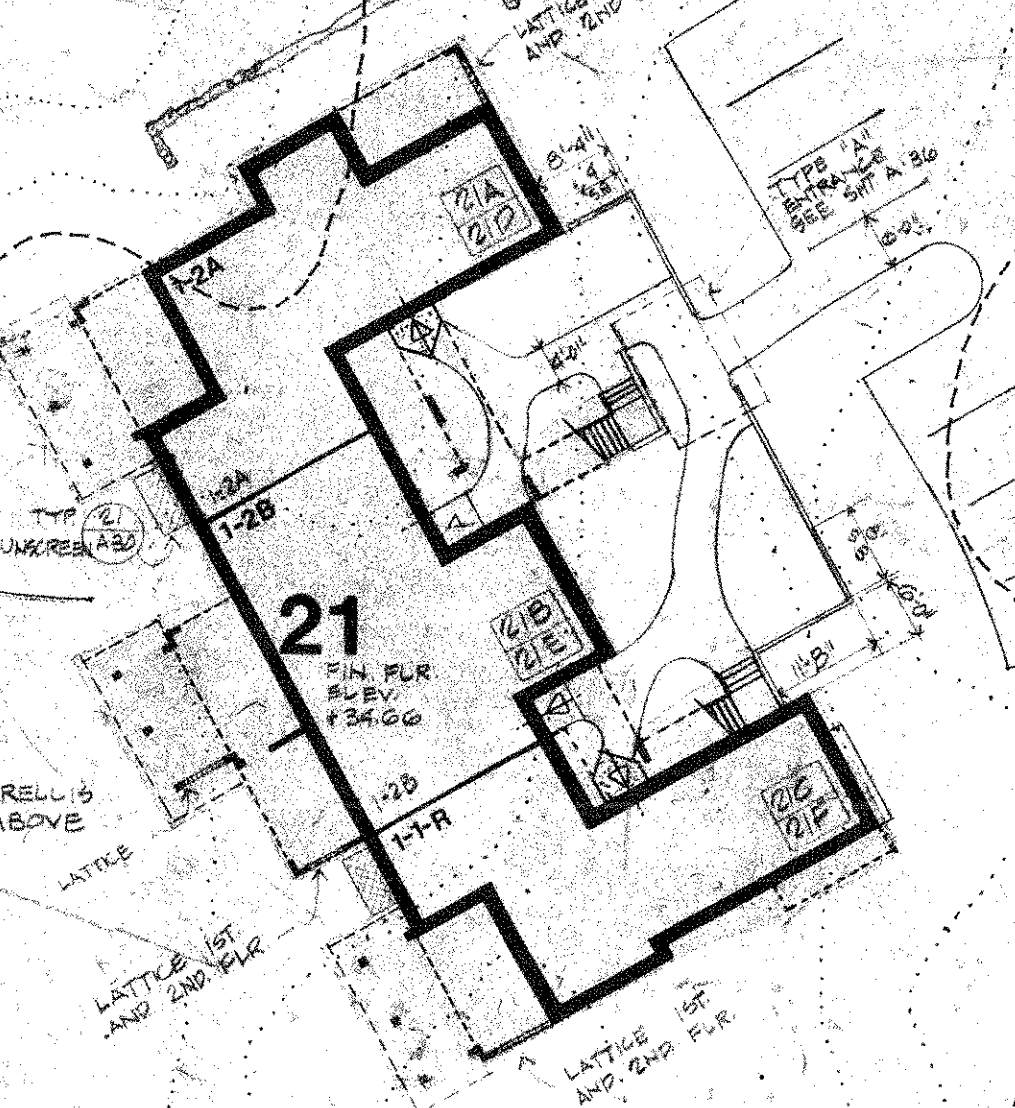
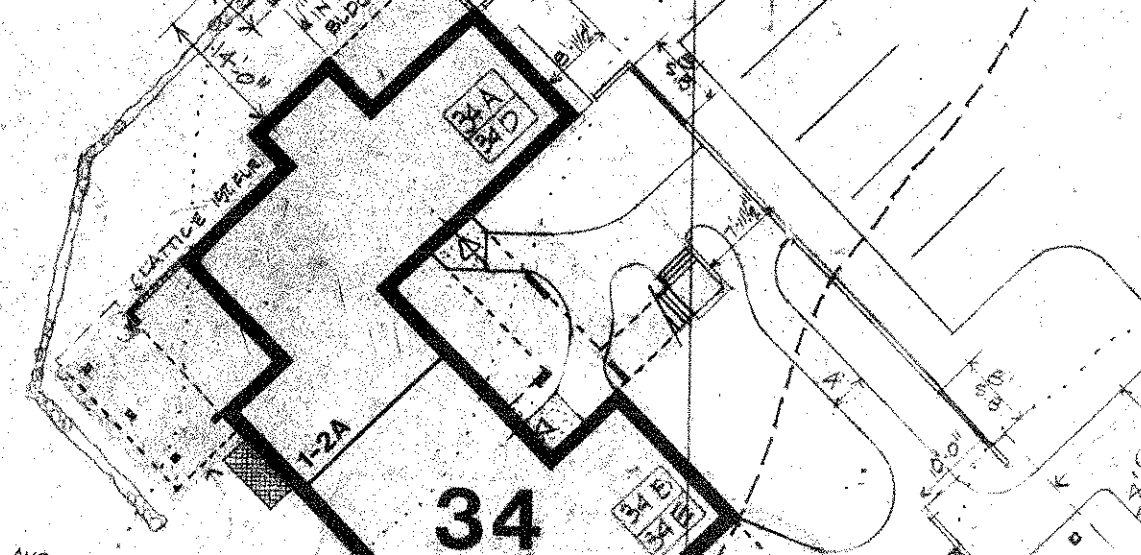
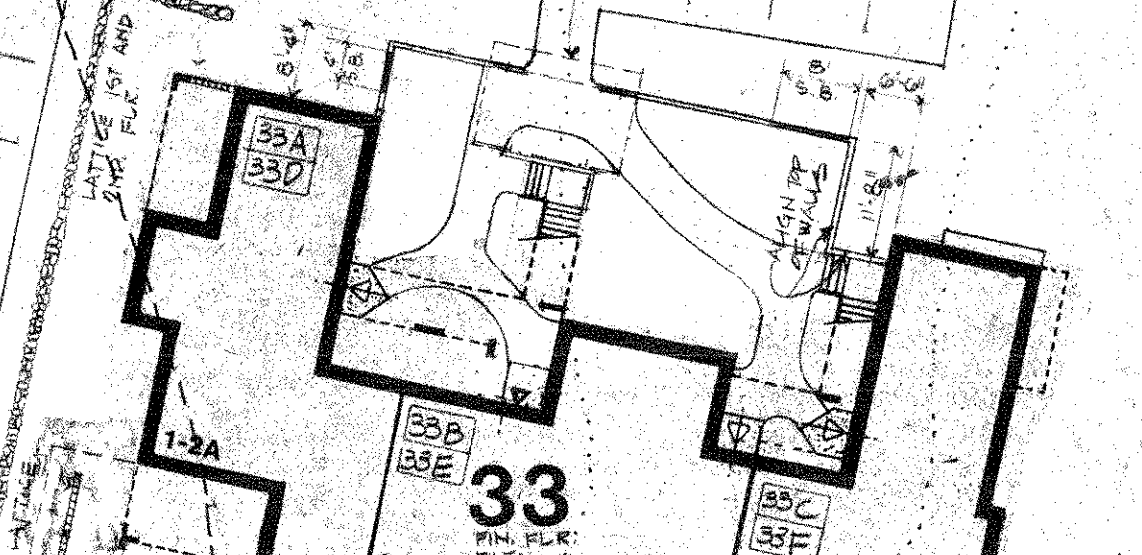
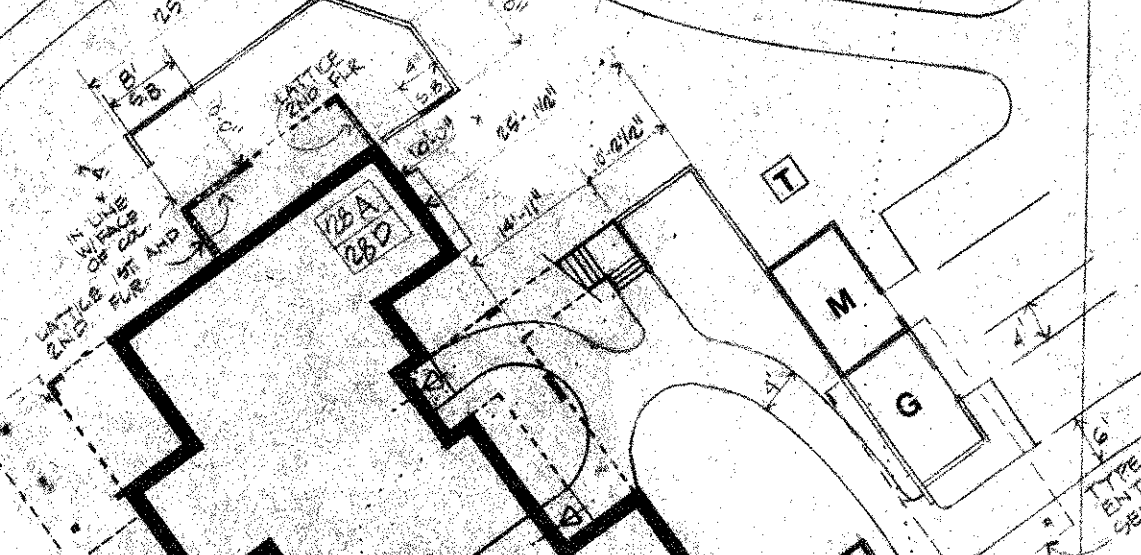
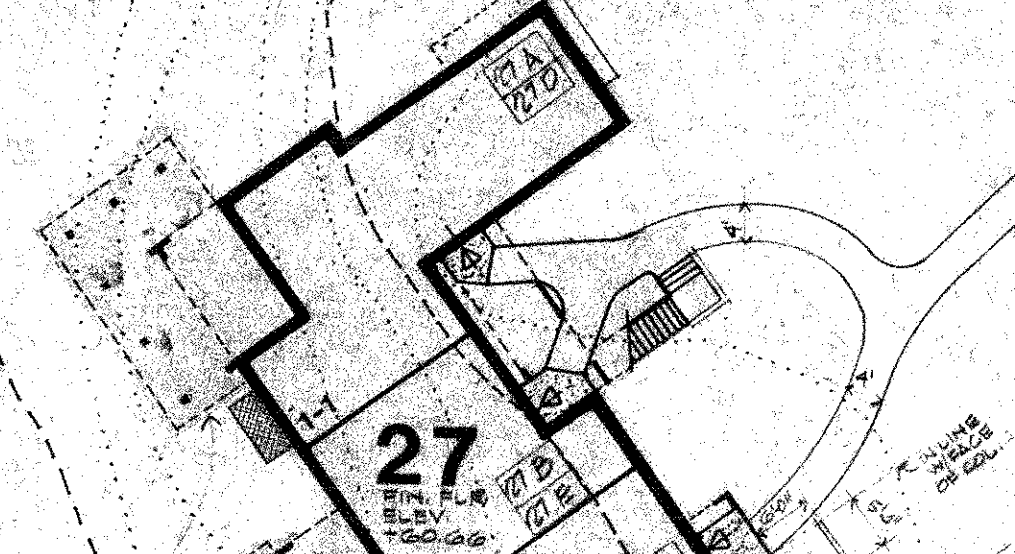
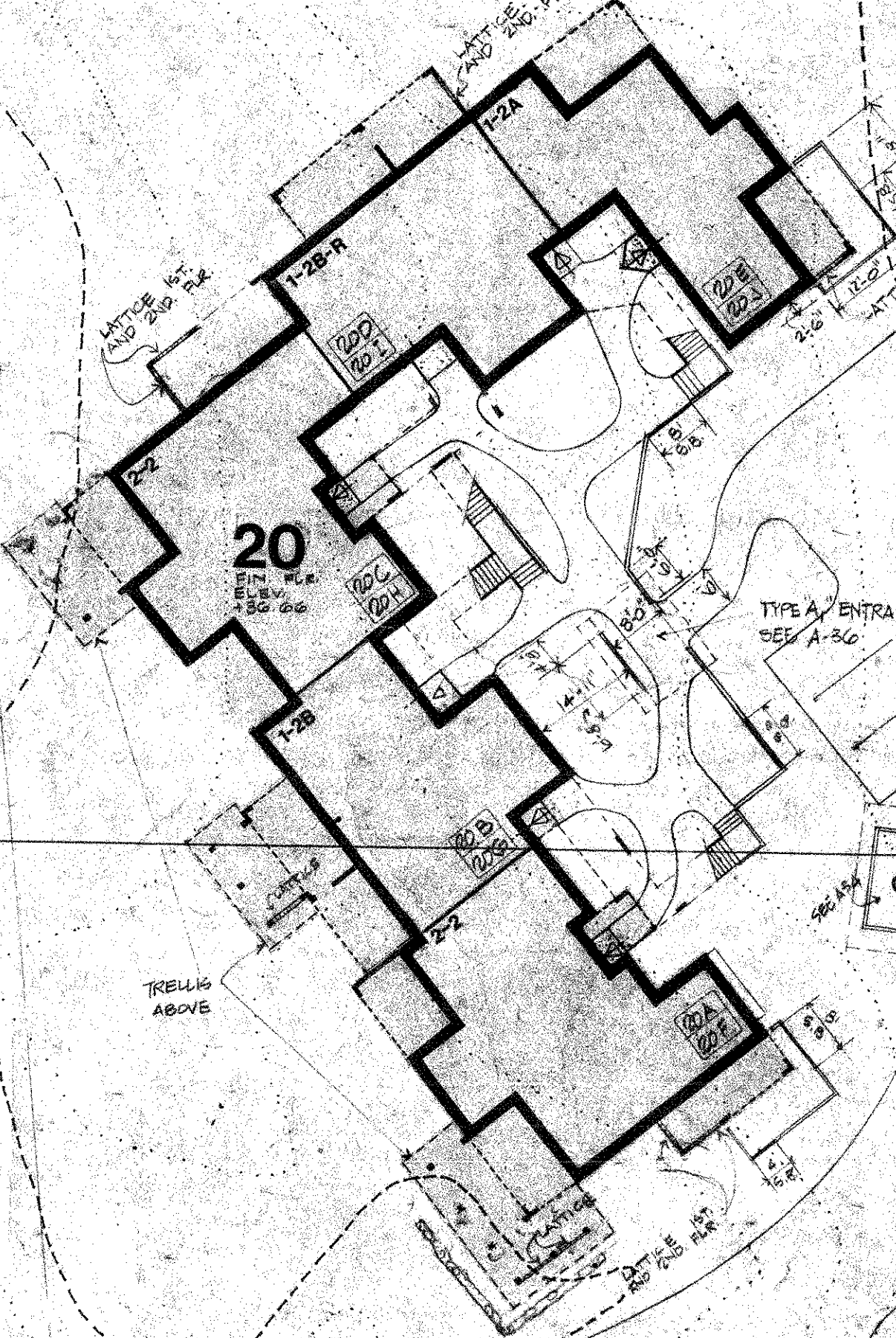
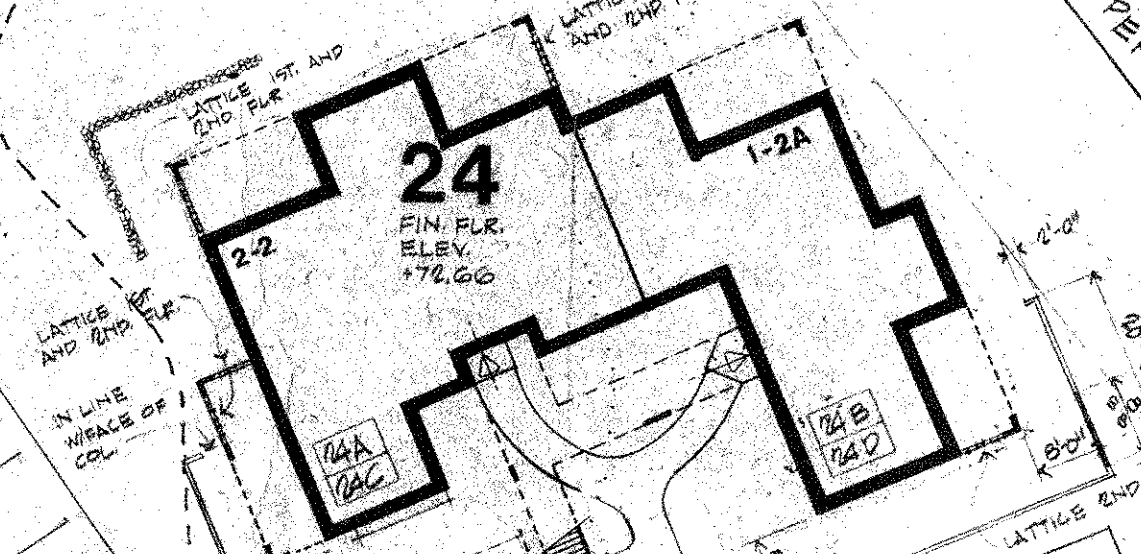
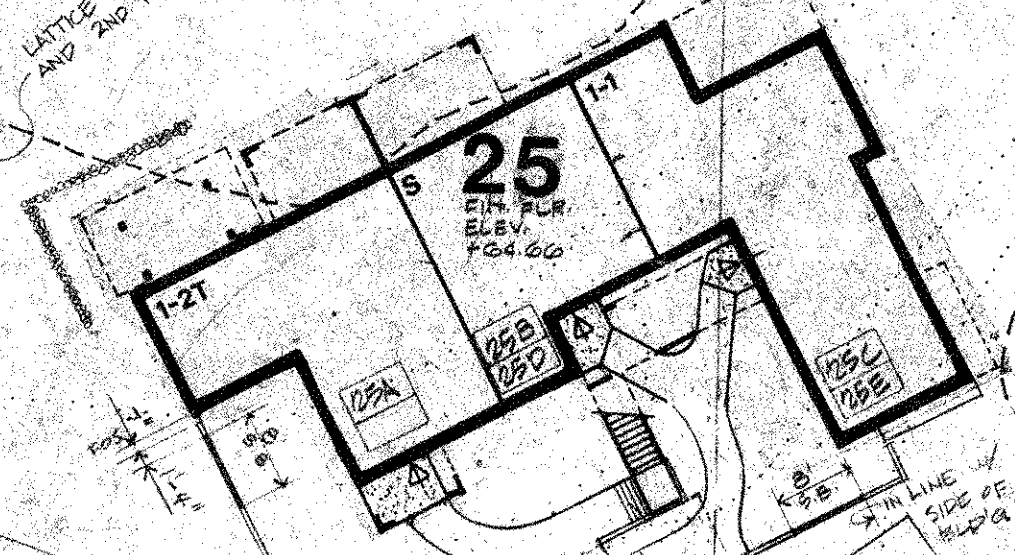
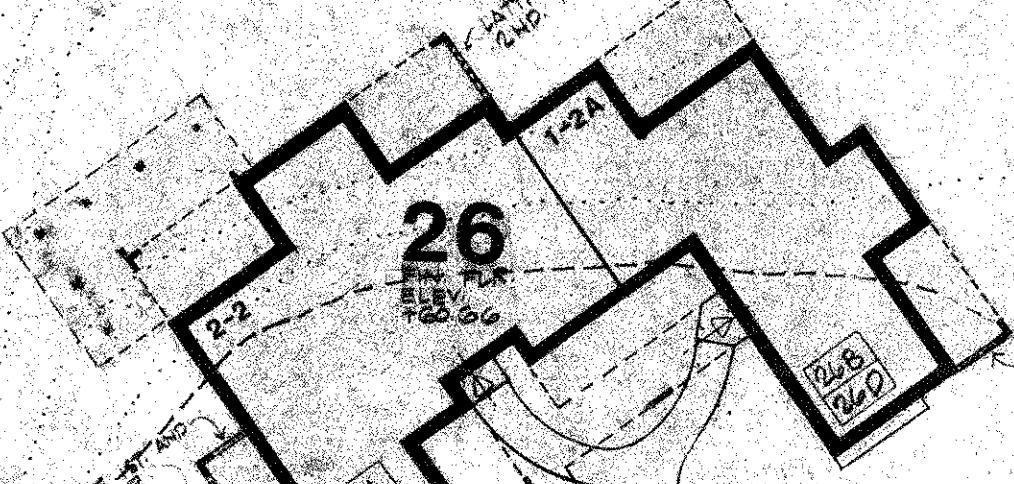
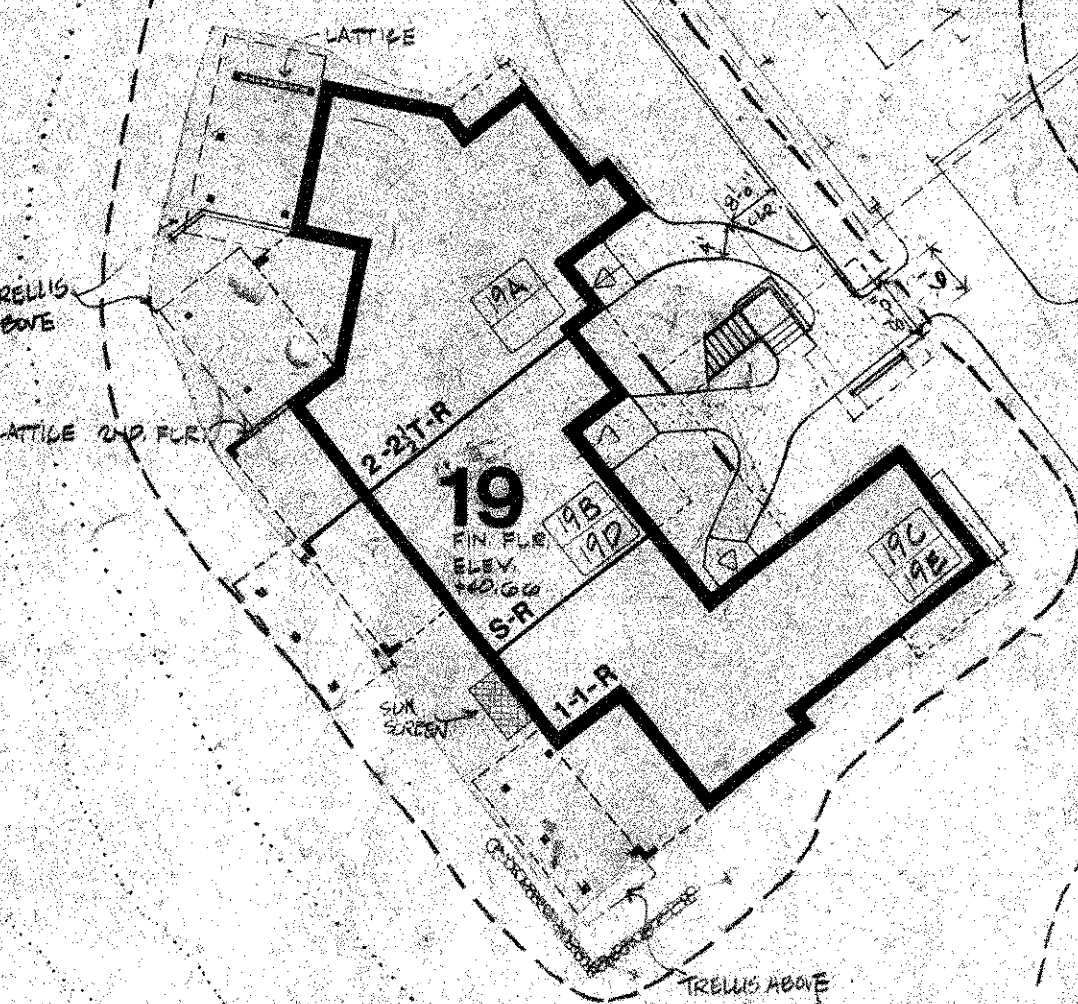
TYPICAL PARKING DETAIL
 PROPOSED TO BE

Wailea

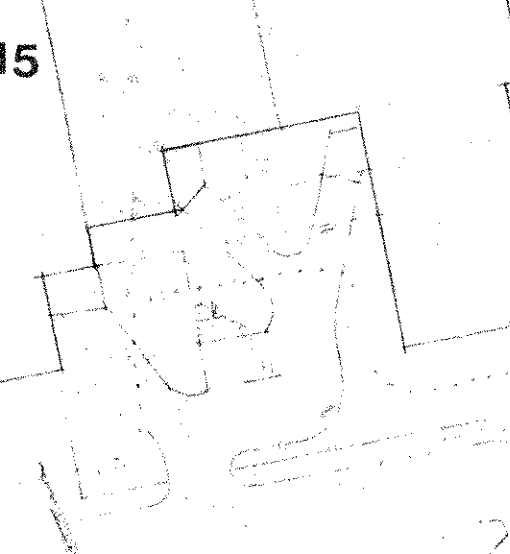
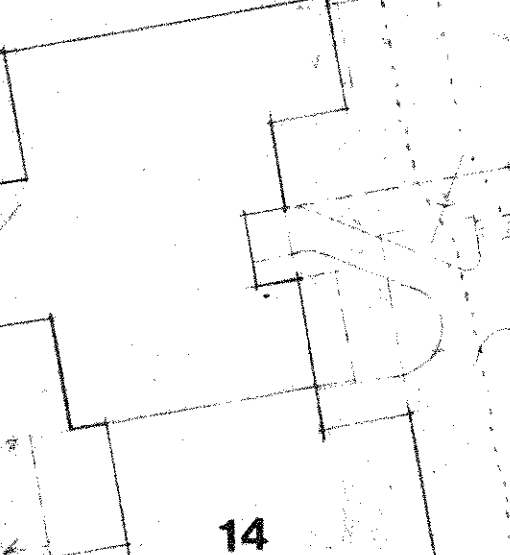
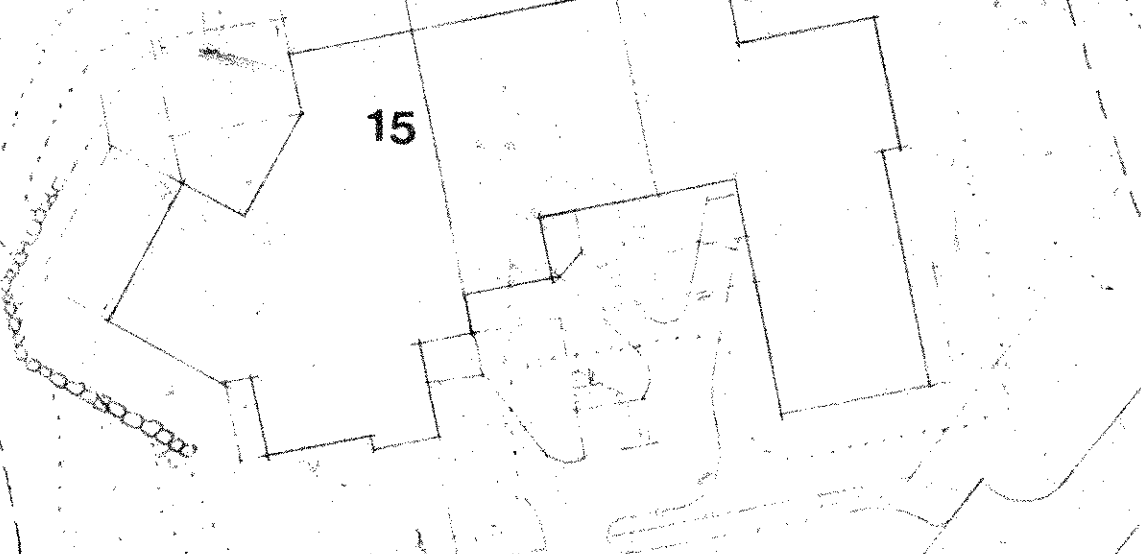
KIHEI ROAD

WAILEA ALANUI

FINAL
CONSTRUCTION PLANS
MAR 17 1975



PHASE I
EXISTING BUILDINGS



LIMIT OF PHASE I

QUADRANT 1
QUADRANT 2

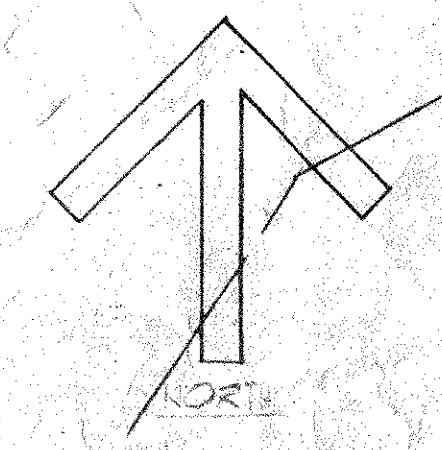
UNIT NUMBERS
BUILDING NUMBER
UNIT TYPE



- NOTES:**
1. CONTRACTOR SHALL REMOVE ALL EXISTING DEBRIS IN DRAINAGE DITCHES, EROSION AND OTHER AREAS, AS A RESULT OF HIS WORK.
 2. CONTRACTOR SHALL KEEP THE PROJECT AREA AND SURROUNDING AREAS FREE FROM DUST AND NOISE, IN CONFORMANCE WITH ALL APPLICABLE LOCAL, STATE AND FEDERAL REGULATIONS OF THE STATE DEPARTMENT OF HEALTH.
 3. ALL WORKING OPERATIONS SHALL BE PERFORMED IN CONFORMANCE WITH THE APPLICABLE REGULATIONS OF THE HAWAII POLLUTION CONTROL AND HAZARDOUS WASTE CONTROL ACTS, PUBLIC HEALTH REGULATIONS, STATE DEPARTMENT OF HEALTH, IN HAWAII POLLUTION CONTROL ACTS, HAZARDOUS WASTE CONTROL ACTS AND EXPOSURE ACTS. SHALL BE COVERED OR PLANTED IMMEDIATELY AFTER THE FINISHING WORK HAS BEEN COMPLETED.
 4. CONSTRUCTION DEBRIS AND WASTE SHALL BE DEPOSITED AT AN APPROPRIATE SITE. THE CONTRACTOR SHALL NOTIFY THE BUREAU OF THE LOCATION OF DISPOSAL SITES. THE HAWAII STATE DEPARTMENT OF HEALTH SHALL BE NOTIFIED OF THE DEBRIS OPERATIONS.
 5. CONTRACTOR SHALL OBTAIN A WORK TO BE DONE ON HIGHWAY TERMS FROM THE HAWAII STATE DEPARTMENT OF PUBLIC WORKS. THIS WORK SHALL BE DONE IN ACCORDANCE WITH THE HAWAII STATE DEPARTMENT OF PUBLIC WORKS. THIS WORK SHALL BE DONE IN ACCORDANCE WITH THE HAWAII STATE DEPARTMENT OF PUBLIC WORKS.
 6. CONTRACTOR SHALL OBTAIN A GRADING PERMIT FROM THE LAND USE AND CONSERVATION DEPARTMENT OF HAWAII. THIS PERMIT SHALL BE OBTAINED BEFORE ANY GRADING OR CONSTRUCTION WORK BEGINS. THE CONTRACTOR SHALL OBTAIN A GRADING PERMIT FROM THE LAND USE AND CONSERVATION DEPARTMENT OF HAWAII. THIS PERMIT SHALL BE OBTAINED BEFORE ANY GRADING OR CONSTRUCTION WORK BEGINS.
 7. CONTRACTOR SHALL PROVIDE, INSTALL AND MAINTAIN ALL NECESSARY SIGNS, LIGHTS, BARRIERS, AND OTHER PROTECTIVE DEVICES FOR THE PROTECTION, SAFETY AND CONVENIENCE OF THE PUBLIC. THE CONTRACTOR SHALL MAINTAIN ALL NECESSARY SIGNS, LIGHTS, BARRIERS, AND OTHER PROTECTIVE DEVICES FOR THE PROTECTION, SAFETY AND CONVENIENCE OF THE PUBLIC.
 8. CONTRACTOR SHALL MAINTAIN ALL NECESSARY SIGNS, LIGHTS, BARRIERS, AND OTHER PROTECTIVE DEVICES FOR THE PROTECTION, SAFETY AND CONVENIENCE OF THE PUBLIC. THE CONTRACTOR SHALL MAINTAIN ALL NECESSARY SIGNS, LIGHTS, BARRIERS, AND OTHER PROTECTIVE DEVICES FOR THE PROTECTION, SAFETY AND CONVENIENCE OF THE PUBLIC.
 9. CONTRACTOR SHALL MAINTAIN ALL NECESSARY SIGNS, LIGHTS, BARRIERS, AND OTHER PROTECTIVE DEVICES FOR THE PROTECTION, SAFETY AND CONVENIENCE OF THE PUBLIC. THE CONTRACTOR SHALL MAINTAIN ALL NECESSARY SIGNS, LIGHTS, BARRIERS, AND OTHER PROTECTIVE DEVICES FOR THE PROTECTION, SAFETY AND CONVENIENCE OF THE PUBLIC.
 10. CONTRACTOR SHALL MAINTAIN ALL NECESSARY SIGNS, LIGHTS, BARRIERS, AND OTHER PROTECTIVE DEVICES FOR THE PROTECTION, SAFETY AND CONVENIENCE OF THE PUBLIC. THE CONTRACTOR SHALL MAINTAIN ALL NECESSARY SIGNS, LIGHTS, BARRIERS, AND OTHER PROTECTIVE DEVICES FOR THE PROTECTION, SAFETY AND CONVENIENCE OF THE PUBLIC.
 11. CONTRACTOR SHALL MAINTAIN ALL NECESSARY SIGNS, LIGHTS, BARRIERS, AND OTHER PROTECTIVE DEVICES FOR THE PROTECTION, SAFETY AND CONVENIENCE OF THE PUBLIC. THE CONTRACTOR SHALL MAINTAIN ALL NECESSARY SIGNS, LIGHTS, BARRIERS, AND OTHER PROTECTIVE DEVICES FOR THE PROTECTION, SAFETY AND CONVENIENCE OF THE PUBLIC.
 12. CONTRACTOR SHALL MAINTAIN ALL NECESSARY SIGNS, LIGHTS, BARRIERS, AND OTHER PROTECTIVE DEVICES FOR THE PROTECTION, SAFETY AND CONVENIENCE OF THE PUBLIC. THE CONTRACTOR SHALL MAINTAIN ALL NECESSARY SIGNS, LIGHTS, BARRIERS, AND OTHER PROTECTIVE DEVICES FOR THE PROTECTION, SAFETY AND CONVENIENCE OF THE PUBLIC.
 13. CONTRACTOR SHALL MAINTAIN ALL NECESSARY SIGNS, LIGHTS, BARRIERS, AND OTHER PROTECTIVE DEVICES FOR THE PROTECTION, SAFETY AND CONVENIENCE OF THE PUBLIC. THE CONTRACTOR SHALL MAINTAIN ALL NECESSARY SIGNS, LIGHTS, BARRIERS, AND OTHER PROTECTIVE DEVICES FOR THE PROTECTION, SAFETY AND CONVENIENCE OF THE PUBLIC.
 14. CONTRACTOR SHALL MAINTAIN ALL NECESSARY SIGNS, LIGHTS, BARRIERS, AND OTHER PROTECTIVE DEVICES FOR THE PROTECTION, SAFETY AND CONVENIENCE OF THE PUBLIC. THE CONTRACTOR SHALL MAINTAIN ALL NECESSARY SIGNS, LIGHTS, BARRIERS, AND OTHER PROTECTIVE DEVICES FOR THE PROTECTION, SAFETY AND CONVENIENCE OF THE PUBLIC.
 15. CONTRACTOR SHALL MAINTAIN ALL NECESSARY SIGNS, LIGHTS, BARRIERS, AND OTHER PROTECTIVE DEVICES FOR THE PROTECTION, SAFETY AND CONVENIENCE OF THE PUBLIC. THE CONTRACTOR SHALL MAINTAIN ALL NECESSARY SIGNS, LIGHTS, BARRIERS, AND OTHER PROTECTIVE DEVICES FOR THE PROTECTION, SAFETY AND CONVENIENCE OF THE PUBLIC.

Emerald Home Design and Draft
 100 Dineen Street
 Honolulu, Hawaii 96811
 (813) 477-7813
 Fax: (813) 477-7814
 www.emeraldhome.com

Wailea
EKAHI 2
 PHASE 2 CONSTRUCTION COMPANY



LEGEND
 - - - - - EXISTING CONTOUR
 _____ FINISH CONTOUR

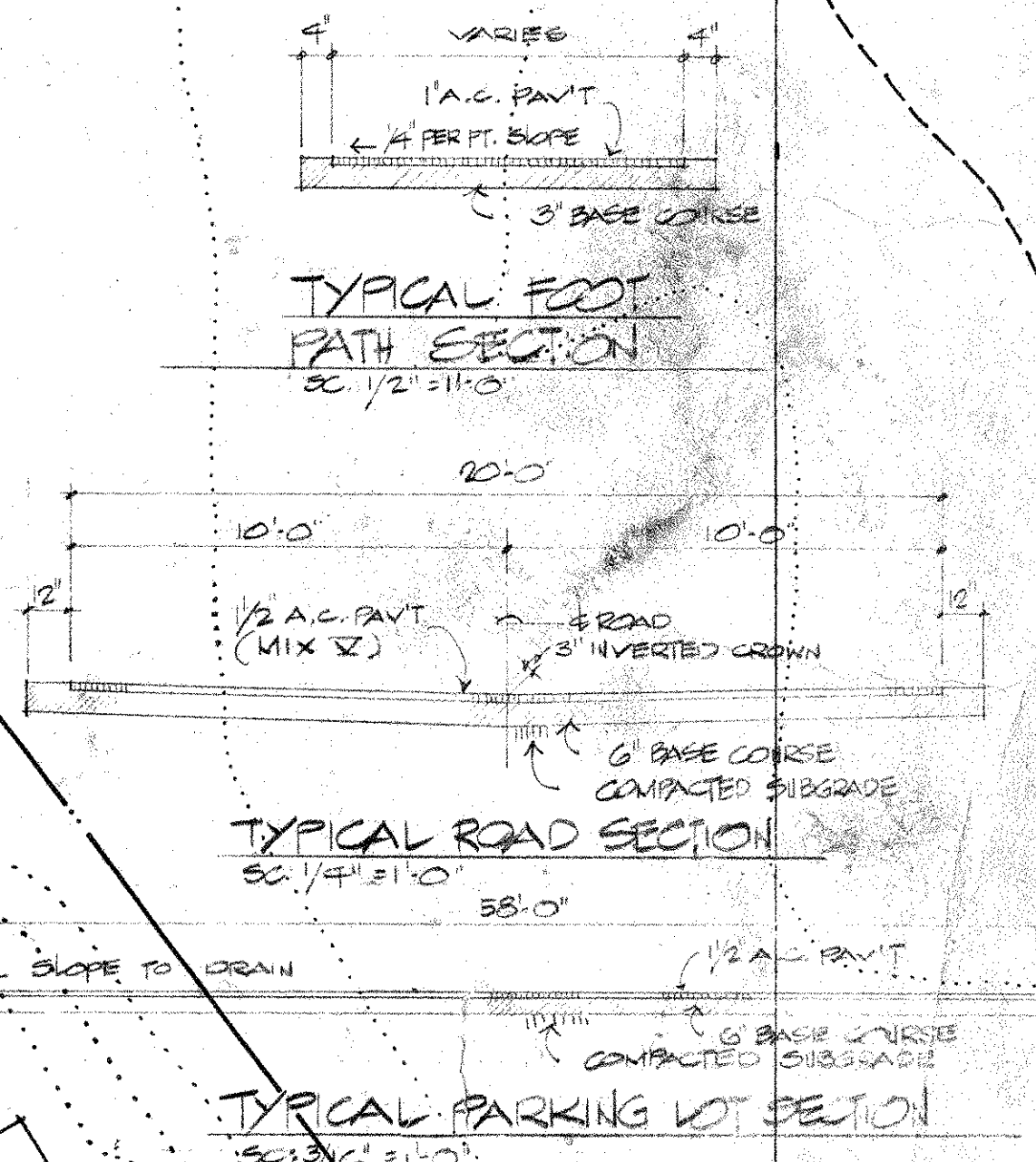
LIMIT OF PHASE I



FIRE HYDRANT CONNECTION MATERIALS LIST
 1. 1" x 1/2" TEES
 2. GATE VALVES
 3. BUILDING VALVE BOXES COVER
 4. FIRE HYDRANT ANTI-SIPHON (FHS) VALVES (2" MODEL 83.5)
 5. 2" GDS BUBBLES
 6. PIPE - LENGTH AS REQUIRED

CENTERLINE CURVE DATA ROAD 'A' PARKING COMPLEX				CENTERLINE CURVE DATA ROAD 'B' PARKING COMPLEX			
CURVE	①	②	③	CURVE	①	②	③
Δ	26° 14'	37° 36' 30"	25° 34'	Δ	38° 55' 57"	47° 41'	30° 30'
R	114.90	43.00	25.10	R	46.00	10.00	10.00
T	74.75	21.00	9.34	T	14.84	17.08	3.98
LC	125.21	99.54	68.07	LC	27.00	32.34	25.37
Lc	192.45	40.22	24.25	Lc	23.34	32.00	25.32

LEGEND
 H.M. WATER METER
 H.V. WATER VALVE
 F.H. FIRE HYDRANT
 W.S. WATERLINE 6" SIZE
 F.W.S. FIRE WATERLINE 4" SIZE
 S.S. SEWERLINE 6" SIZE
 S.S.W. SEWERLINE 30" SIZE
 S.M. SINKER MANHOLE
 C.G. CLEAN OUT TO GRADE
 S.B. SUMP BASIN
 S.D.M. STORM DRAIN MANHOLE
 S.D. STORM DRAIN 24" SIZE (ALL STORM DRAIN CORRECT METAL PIPE)



KAHI 2
 HAWAIIAN LAND COMPANY
 HONOLULU, HAWAII

