

CONTROLLER A - WATERING SCHEDULE				CONTROLLER B - WATERING SCHEDULE			
Station No.	GPM	Location	Total GPM	Station No.	GPM	Location	Total GPM
1	86	Bldg. No. 7	150	1	49	Beach Pavilion	147
64	64	Bldg. Nos. 16 & 17		98	98	Bldg. No. 16	
2	64	Bldg. Nos. 8 & 9	146	2	60	Beach Pavilion	154
38	38	Bldg. No. 15		86	94	Bldg. Nos. 1 & 3	
49	49	Bldg. No. 14	159	3	89	Bldg. Nos. 7 & 8	132
53	53	Bldg. Nos. 5 & 6	20	20	Bldg. No. 10		
33	33	Bldg. Nos. 10 & 11	15	23	Bldg. No. 11		
3	3	Bldg. No. 3	113	4	86	Bldg. Nos. 6 & 7	113
4	38	Bldg. No. 10	25	25	Bldg. No. 12		
79	79	Bldg. Nos. 12 & 13	102	5	83	Bldg. Nos. 4 & 5	160
5	57	Bldg. Nos. 2 & 4	77	77	Bldg. No. 2		
48	48	Bldg. No. 1	135	6	101	Bldg. Nos. 13, 14 & 15	135
6	63	Beach Pavilion	56	56	Bldg. Nos. 7 & 8		
72	72	Bldg. No. 16	63	63	Bldg. Nos. 6 & 7		
7	76	Beach Pavilion	142	6	63	Bldg. Nos. 16 & 17	151
6	66	Upper Pool	94	94	Bldg. Nos. 4 & 5		
8	8	Bldg. No. 7	147	9	42	Bldg. No. 10	148
11	11	Bldg. No. 11	42	42	Bldg. Nos. 13, 14 & 15		
9	9	Upper Pool	141	10	48	Bldg. No. 11	95
1	1	Bldg. No. 1	47	47	Bldg. Nos. 12 & 13		
10	10	Bldg. Nos. 5, 6 & 7	127	11	91	Bldg. Nos. 1, 2 & 3	91
17	17	Bldg. No. 17	10	10	Lower gulch		
11	11	Lower gulch	151	12	108	Bldg. Nos. 12 & 13	

GENERAL NOTES:
 1. Controllers A and B should ultimately be operated on alternate days. Do not operate Controllers A and B simultaneously.
 2. Time and frequency of watering shall be revised to suite field conditions.

WAILĒA WATERS
WATERWORKS SCHEDULE

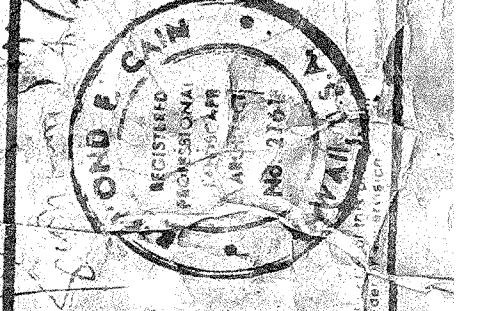
Station No.	G.P.M.	Location	Total O.P.M.	Est. Working Hours
CONTROLLER "A"				
A-1	118	Bldg. No. 19	118	20 Min.
A-2	104	Bldg. No. 20	104	20 Min.
A-3	76	Bldg. No. 21	76	20 Min.
A-4	73.5	Bldg. No. 24	73.5	20 Min.
A-5	75.5	Bldg. No. 28	75.5	20 Min.
A-6	61	Bldg. No. 30	61	20 Min.
A-7	92	Bldg. No. 29	92	20 Min.
A-8	41.5	Bldg. No. 35	41.5	20 Min.
A-9	88.5	Bldg. No. 28	88.5	20 Min.
A-10	76.5	Bldg. No. 30	76.5	20 Min.
A-11	66	Bldg. No. 23	66	20 Min.
A-12	104	Bldg. No. 31	104	20 Min.
A-13	96.5	Bldg. No. 33	96.5	20 Min.
A-14	53.5	Bldg. No. 34	53.5	20 Min.
A-15	115	Bldg. No. 34	115	20 Min.
A-16	77.5	Bldg. No. 22	77.5	20 Min.
A-17	72	Bldg. No. 27	72	20 Min.

Station No.	G.P.M.	Location	Total O.P.M.	Est. Working Hours
CONTROLLER "B"				
B-1	73	Bldg. No. 26	73	20 Min.
B-2	102	Bldg. No. 31	102	20 Min.
B-3	95	Bldg. No. 23	95	20 Min.
B-4	79	Bldg. No. 28	79	20 Min.
B-5	58	Bldg. No. 29	58	20 Min.
B-6	40	Bldg. No. 19	40	20 Min.
B-7	50.4	Bldg. No. 23	50.4	20 Min.
B-8	58.2	Bldg. No. 23	58.2	20 Min.
B-9	67.2	Bldg. No. 35	67.2	20 Min.
B-10	100	Bldg. No. 28	100	20 Min.
B-11	197	Bldg. No. 30	197	20 Min.
B-12	144.3	Bldg. No. 24	144.3	20 Min.
B-13	125.4	Bldg. No. 23	125.4	20 Min.

GENERAL NOTES:
1. Irrigation for Quad 1 shall not be watered concurrently with Quad 2.
Irrigation water supply limited by complete 4" main supply line from Waipae "Janus" coach.



NO.	DATE	DESCRIPTION
5	11/15/50	MAINT. PLAN
4	11/15/50	PLAN
3	11/15/50	PLAN
2	11/15/50	PLAN
1	11/15/50	PLAN



WAILĒA WATERWORKS
1415 KĪHEI STREET
HONOLULU, HAWAII

Wailea
E'KAHI 2
PHASE I
QUAD 1

UNIT NUMBER
BUILDING NUMBER
UNIT TYPE

REVISIONS

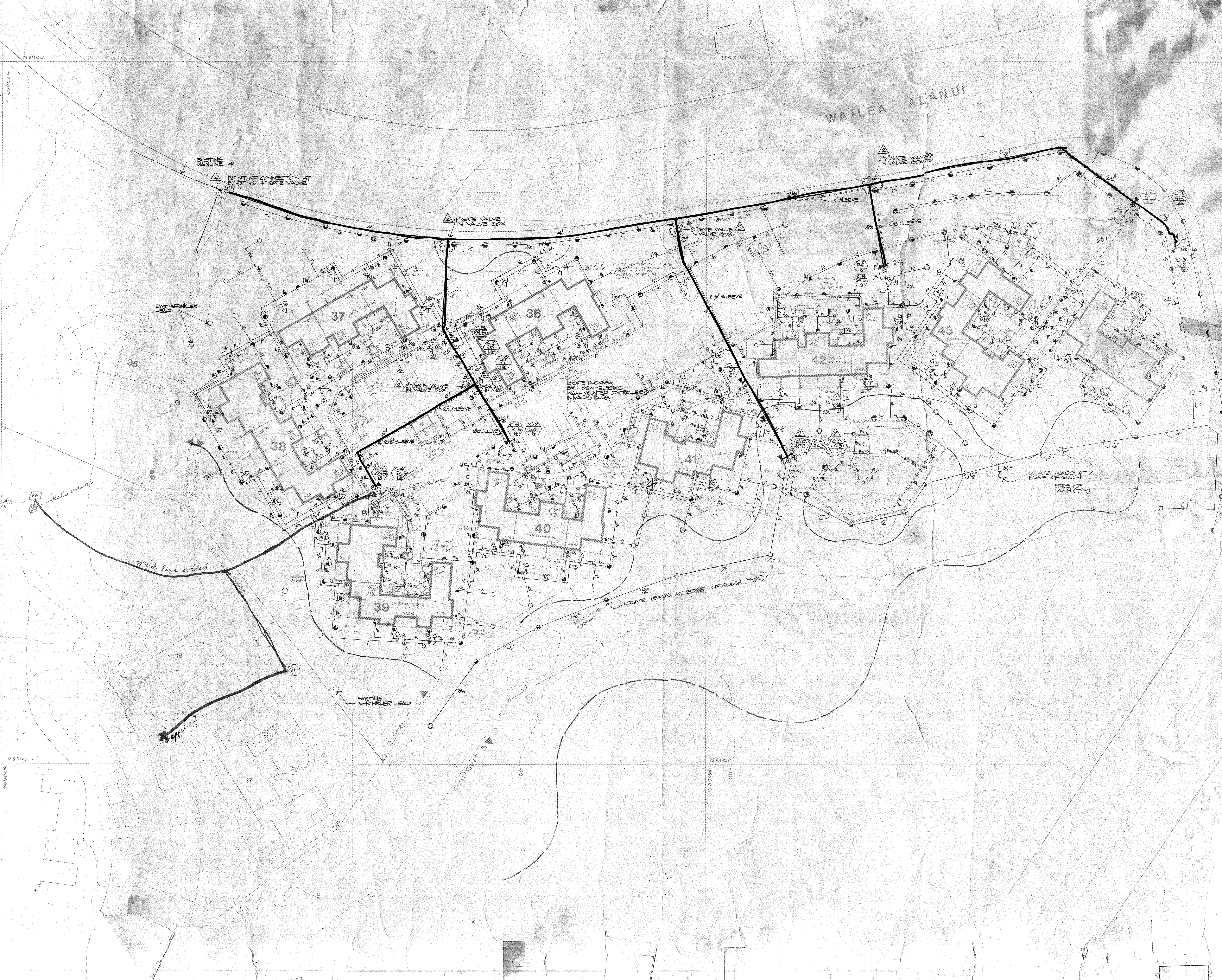
DATE

BY

CHECKED

APPROVED

WAILEA ALANUI



WAILEA - CITY OF
WATERWORKS DISTRICT
GRADE II

Station No.	C.P.M.	Location	Total C.P.M.	Water Xing
CONTROLLER 'C'				
C-1	120	Blkg. No. 41	120	20 Min.
C-2	60	Blkg. No. 42	180	20 Min.
C-3	60	Blkg. No. 43	240	20 Min.
C-4	75	Blkg. No. 44	315	20 Min.
C-5	60	Blkg. No. 35	375	20 Min.
C-6	60	Blkg. No. 36	435	20 Min.
C-7	100	Blkg. No. 37	535	20 Min.
C-8	77	Blkg. No. 38	612	20 Min.
C-9	64.5	Blkg. No. 39	676.5	20 Min.
C-10	49.5	Blkg. No. 40	726	20 Min.

GENERAL NOTES:

1. Irrigation for Quadrant 2 shall not be watered concurrently with Quad 1 irrigation (water supply limited by common 4" main supply line from Wailea Alanui Road).
2. Stations C-1 through C-9 and C-10 shall operate on alternate days after groundcovers become established.

