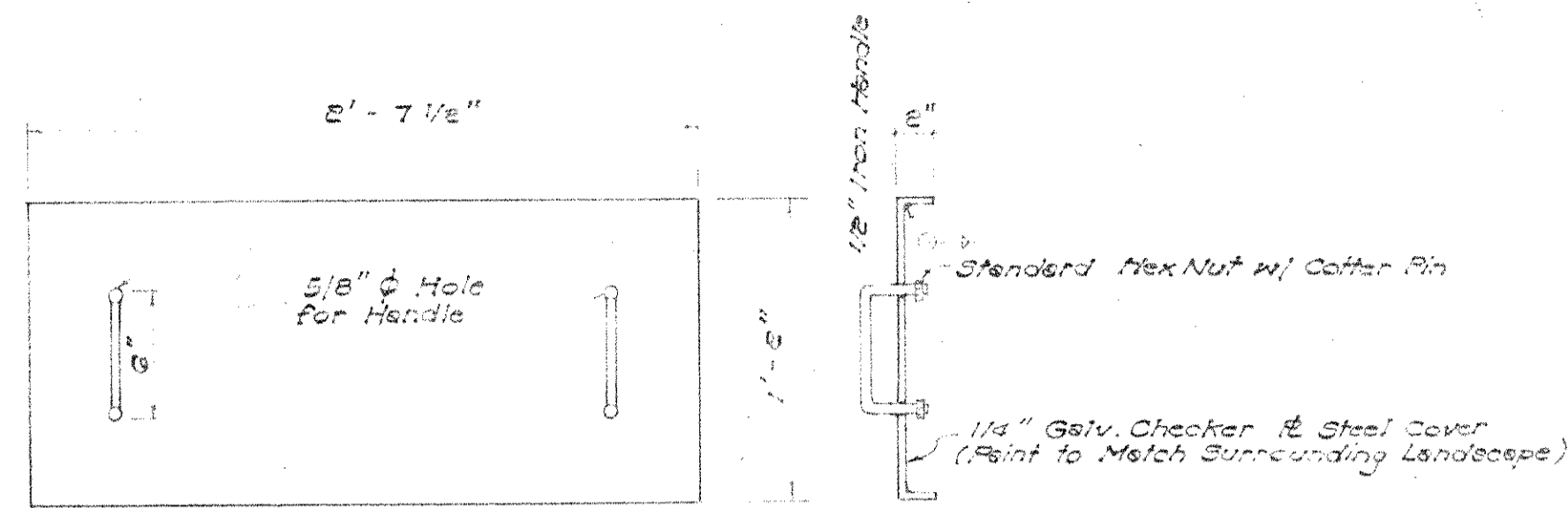
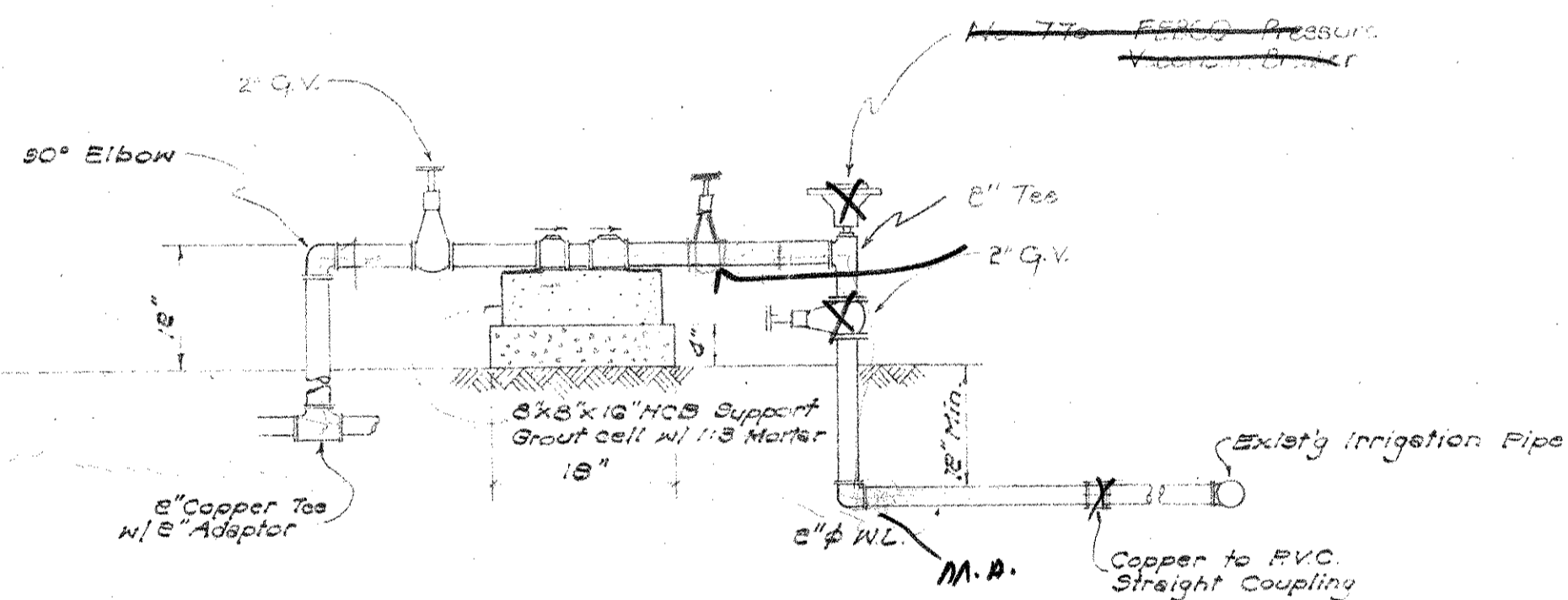


DOUBLE CHECK VALVE DETAILS (UNDERGROUND)
Scale: 3/4" = 1'-0"



STEEL COVER DETAIL
Scale: 1 1/2" = 1'-0"



DOUBLE CHECK VALVE DETAILS (ABOVE GROUND)
Scale: 3/4" = 1'-0"

WAILEA EKAHI IRRIGATION SYSTEM CONVERSION

PREPARED FOR: Wailea Development Co.

PREPARED BY: Norman Saito
Engineering Consultants, Inc.
Kahului, Maui, Hawaii

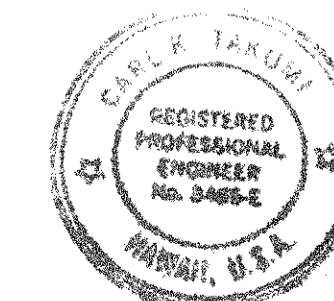
APPROVED:

DIRECTOR,
DEPARTMENT OF WATER SUPPLY
COUNTY OF MAUI

DATE

CHIEF, ENVIRONMENTAL PROTECTION
AND HEALTH SERVICES DIVISION
DEPARTMENT OF HEALTH
STATE OF HAWAII

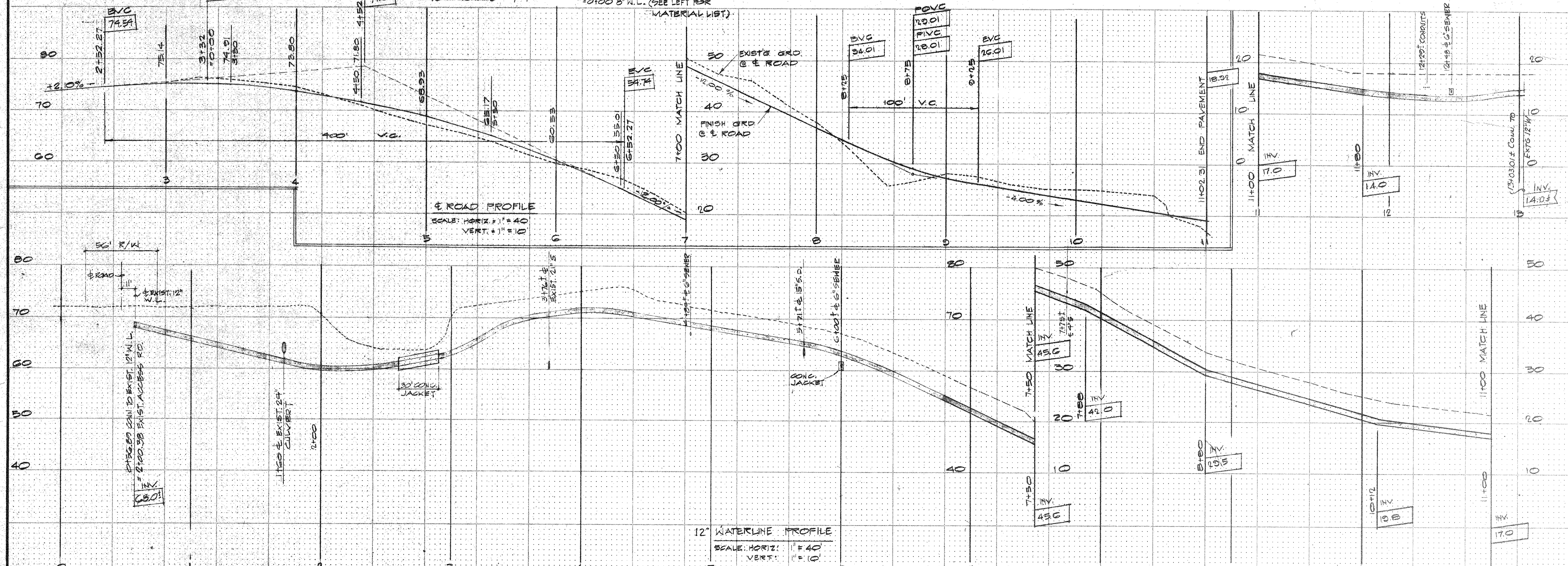
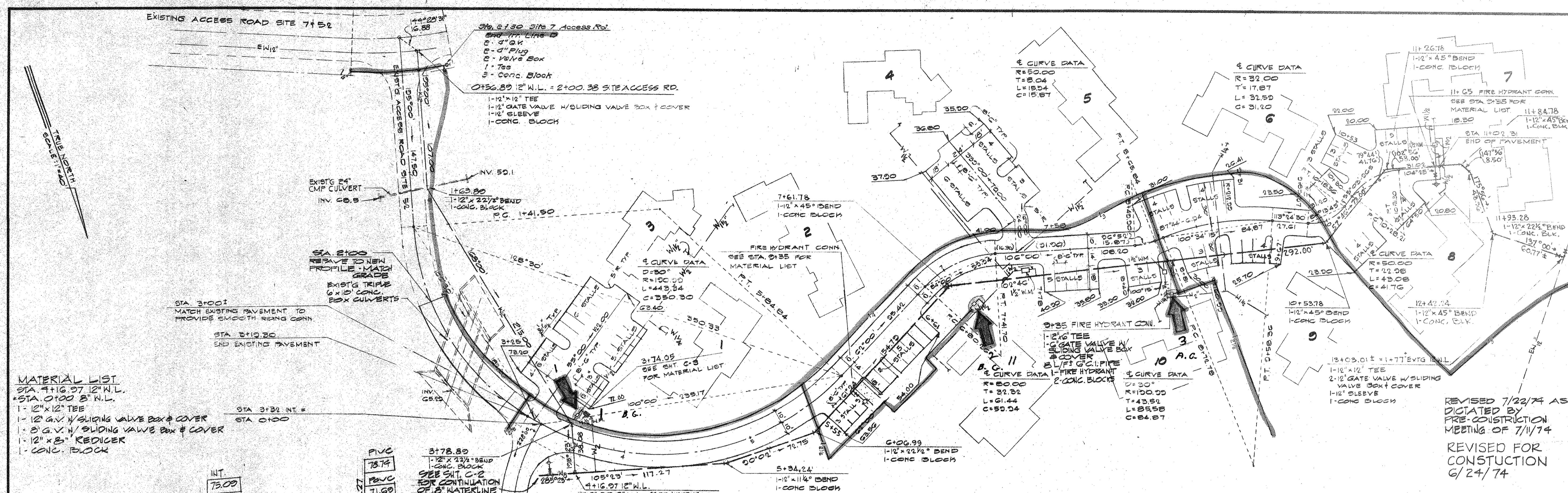
DATE



THIS WORK WAS PREPARED BY
ME OR UNDER MY SUPERVISION

WDC RECEIVED DEC 11 1979
REVISION 1000 10 1979

B.G. 9
A.C. 9



MATERIAL LIST
 STA. 4+16.07 12" W.L.
 STA. 0+00 8" W.L.
 1- 12" x 12" TEE
 1- 8" G.V. w/ SLIDING VALVE BOX & COVER
 1- 8" G.V. w/ SLIDING VALVE BOX & COVER
 1- 12" x 8" REDUCER
 1- CONC. BLOCK

REVISED 7/22/74 AS
 DICTATED BY
 PRE-CONSTRUCTION
 MEETING OF 7/11/74
 REVISED FOR
 CONSTRUCTION
 6/24/74

DATE	7/19/74
BY	ALM
CHECKED	ALM
DATE	8/1/74
BY	ALM
CHECKED	ALM
DATE	8/1/74
BY	ALM
CHECKED	ALM

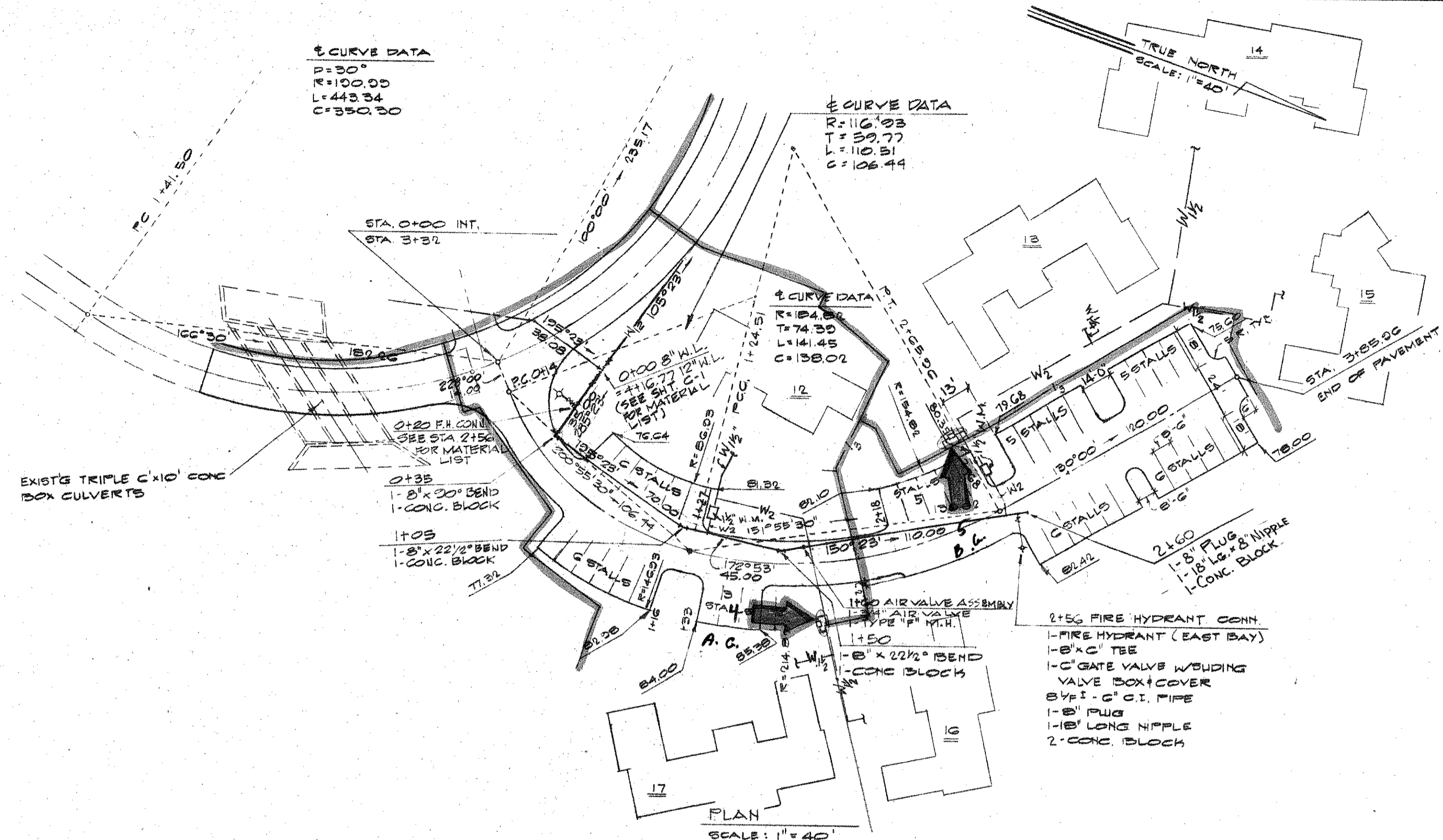
ROBERT K. RUCKERS
 REGISTERED PROFESSIONAL ENGINEER
 LICENSE NO. 10889

Norman Saito Engineering Consultants, Inc.
 Civil Engineers
 P.O. Box L
 Honolulu, Hawaii 96813

Erickson Homes Dodge and Davis
 Architects and Planners
 128 Green Street
 San Francisco, California 94111
 (415) 462-1824

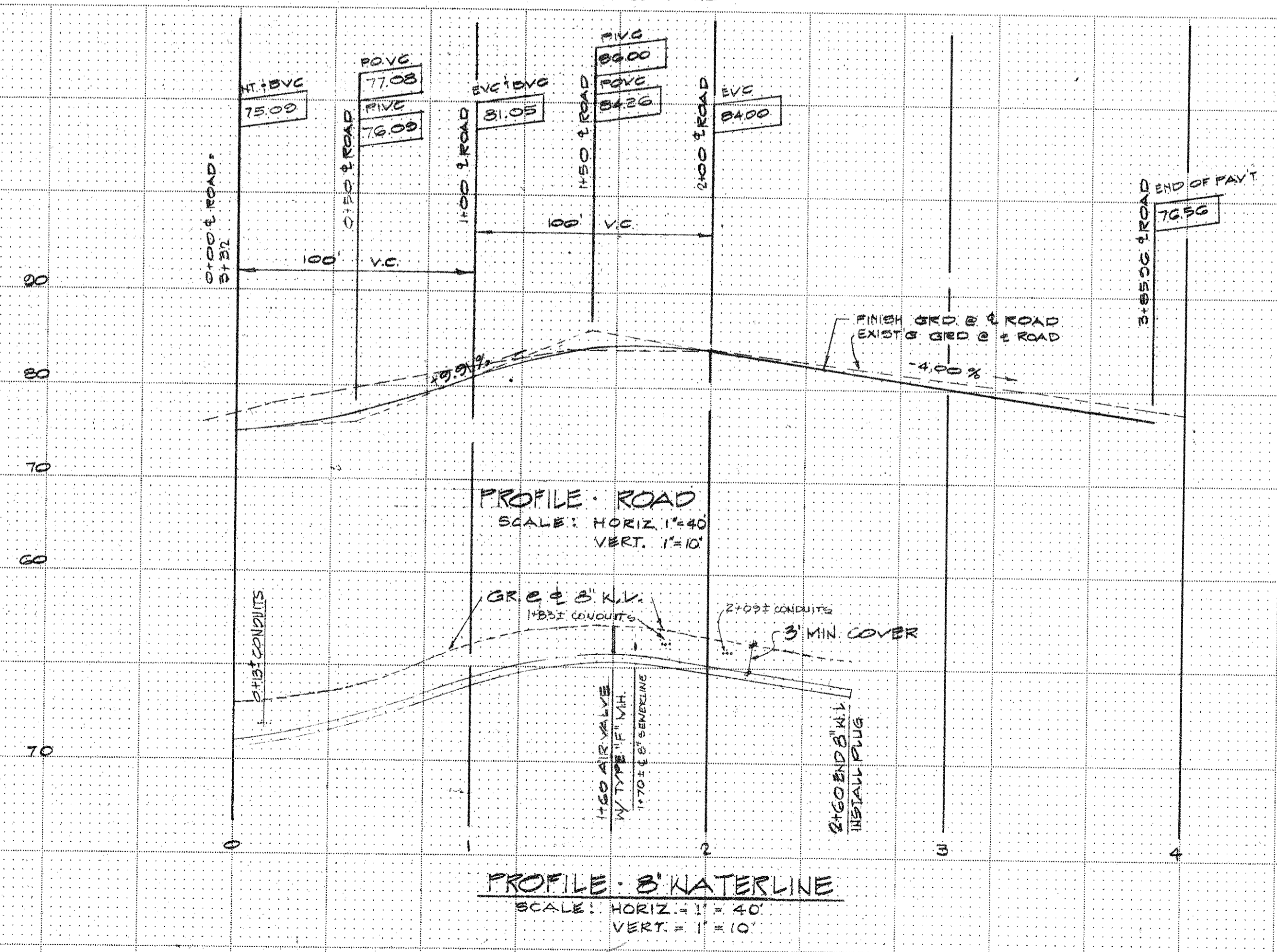
Walea Development Company
 KEAWAKAPU BEACH VILLAGE
 MAUI, HAWAII
 WALEA DEVELOPMENT COMPANY
 222 BISHOP ST., HONOLULU, HAWAII 96813

TMK: 2-1-8-P6r 42
 TITLE
 PLAN PROFILE
 ROADS, PARKING,
 AND WATER
 SERVING: DODGE
 I THRU II
 SCALE
 AS SHOWN
 SHEET
 C-1

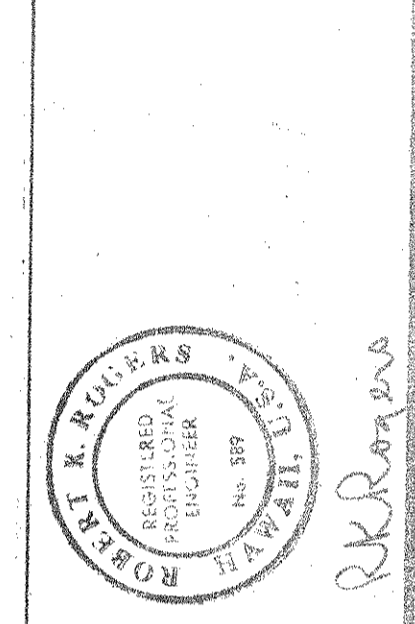


REVISED 7/22/74 AS
 DICTATED BY PRE-CONSTRUCTION
 MEETING OF 7/11/74.

REVISED FOR
 CONSTRUCTION
 6/24/74



DATE	7/15/74
BY	4/24/74
REVISION	
CONSTRUCTION	
FINAL REVIEW	
ISSUED FOR	



Norman Saito Engineering Consultants, Inc.
 Civil Engineers
 P. O. Box 1
 Waihala, Hawaii 96793
 (808) 251-5273

Escherich, Homsby Dodge and Davis
 Architects and Planners
 120 Green Street
 San Francisco, California 94111
 (415) 421-1924

Hans Rickels, AIA
 Architects Associated
 Kahului, Hawaii 96732

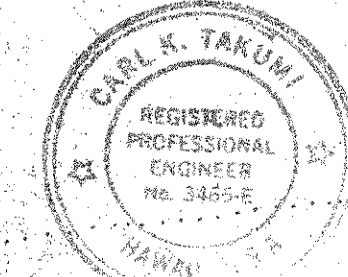
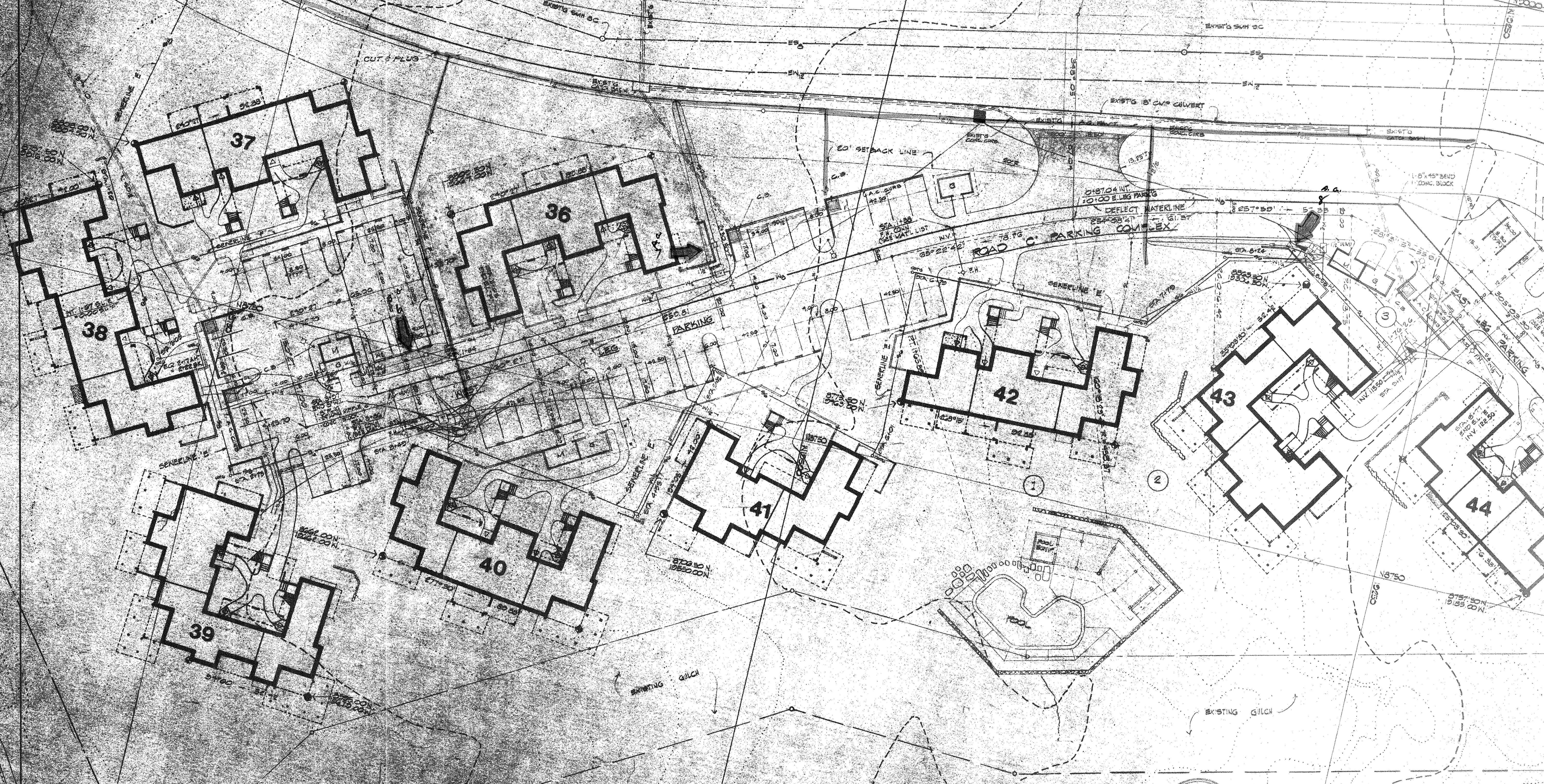
Wailea
 KEAWAKAPU BEACH VILLAGE
 MAUI, HAWAII
 WAILEA DEVELOPMENT COMPANY
 822 BISHOP ST., HONOLULU, HAWAII 96813

TMK: 2-1-B:Por 42
 TITLE
 PLAN + PROFILE
 ROADS, PARKING,
 AND WATER
 SERVING BLDGS
 12 THRU 17.
 SCALE
 AS SHOWN
 SHEET

C-2

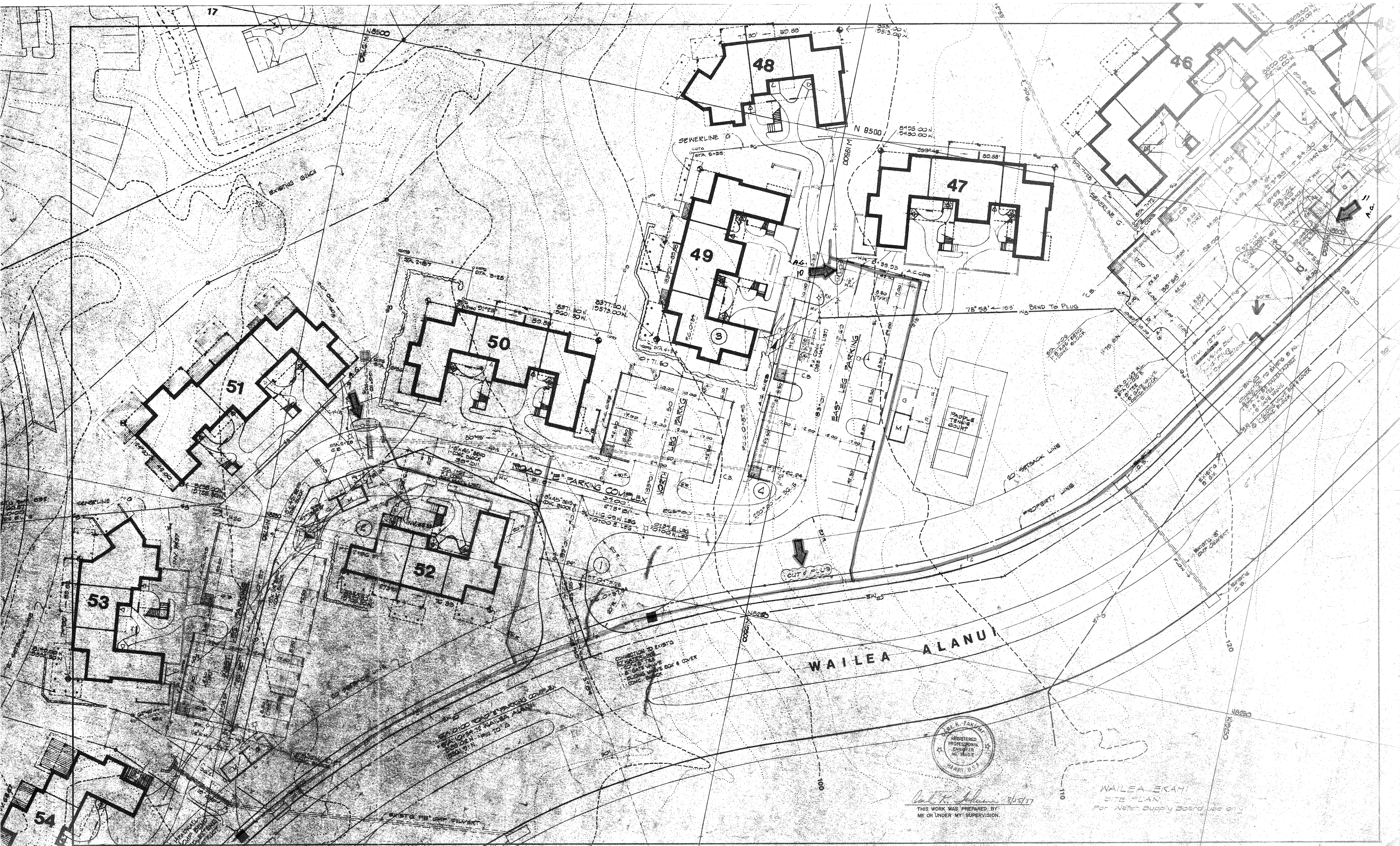
WALEA ALANUI

STA. 0+00 ROAD "C" PARKING COMPLEX
STA. 10+50 WALEA ALANUI
8355.17' ± 1" 10' ±
10427.57' ±



THIS WORK WAS PREPARED BY
ME OR UNDER MY SUPERVISION.

WALEA ALANUI
SITE PLAN
For Water Supply Board use only



WAILEA ALANUI

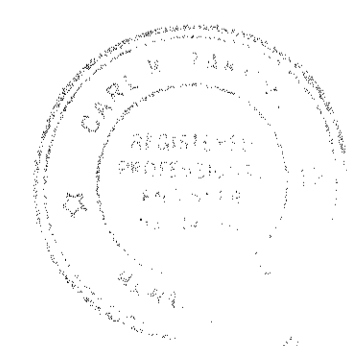


L. K. Johnson 8/25/77
 THIS WORK WAS PREPARED BY
 ME OR UNDER MY SUPERVISION.

WAILEA-EKAHU
 SITE PLAN
 For Water Supply Board Use only



WAILĒA EKAHI
Irrigation System Conversion



Clark M. Johnson
THIS WORK WAS PREPARED BY
ME OR UNDER MY SUPERVISION

FIRE HYDRANT CONNECTION

MATERIAL LIST

- 1- 8" X 6" Tee M.J. FL.
- 1- 6" Gate Valve M.J. FL.
- 1- Sliding Valve Box & Cover
- 1- Fire Hydrant Assembly (Rich Valve Co. Model No. 5)
- 2- Conc. Block
- 6" Pipe as required

- Sta. 11+00
 End 6" Irr. Line
 1- 6" G.V.
 1- Valve Box
 1- 6" Plug
 1- Conc. Block

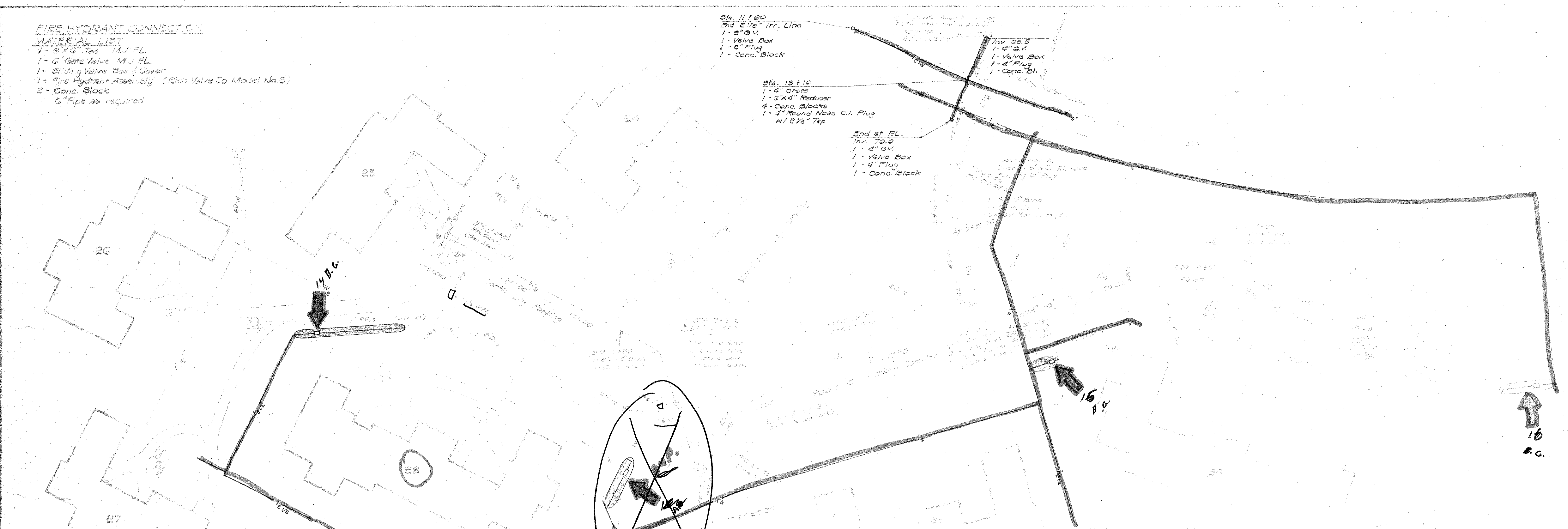
- Sta. 13+10
 1- 4" Cross
 1- 6" X 4" Reducer
 4- Conc. Blocks
 1- 4" Round Nose C.I. Plug
 W/ 6" Eye Tap

- End of P.L.
 Inv. 75.0
 1- 4" G.V.
 1- Valve Box
 1- 4" Plug
 1- Conc. Block

- Inv. 68.5
 1- 4" G.V.
 1- Valve Box
 1- 4" Plug
 1- Conc. Bl.

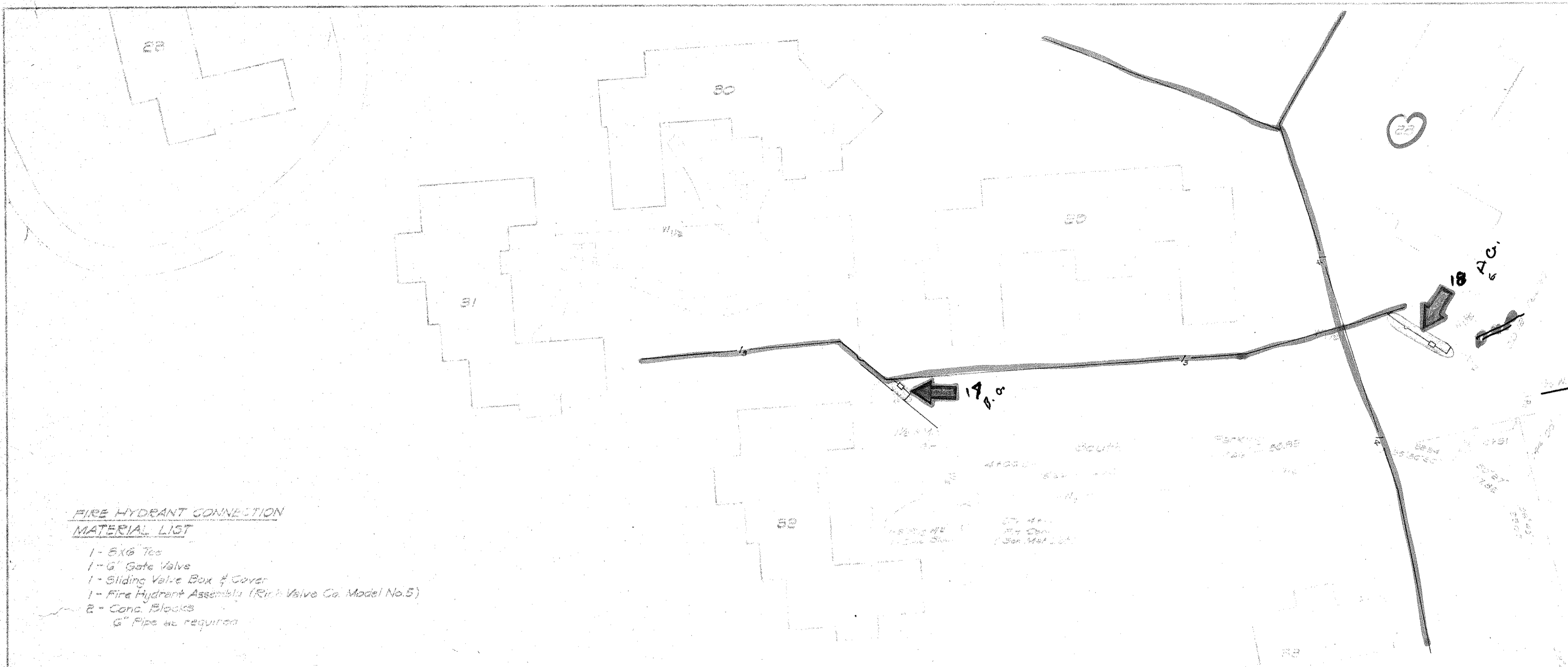
DATE	
BY	
CHECKED	
NO.	
PLAN	
NO.	
DATE	
BY	
CHECKED	
NO.	

DATE	
BY	
CHECKED	
NO.	
PROFILE	
NO.	
DATE	
BY	
CHECKED	
NO.	



Handwritten signature
 THIS WORK WAS PREPARED BY
 ME OR UNDER MY SUPERVISION.

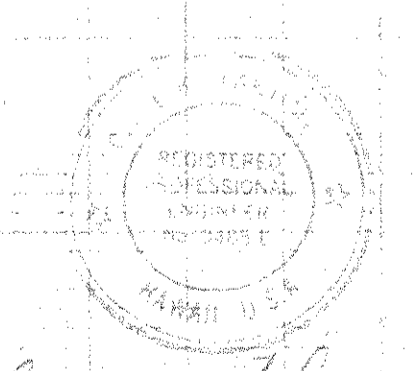
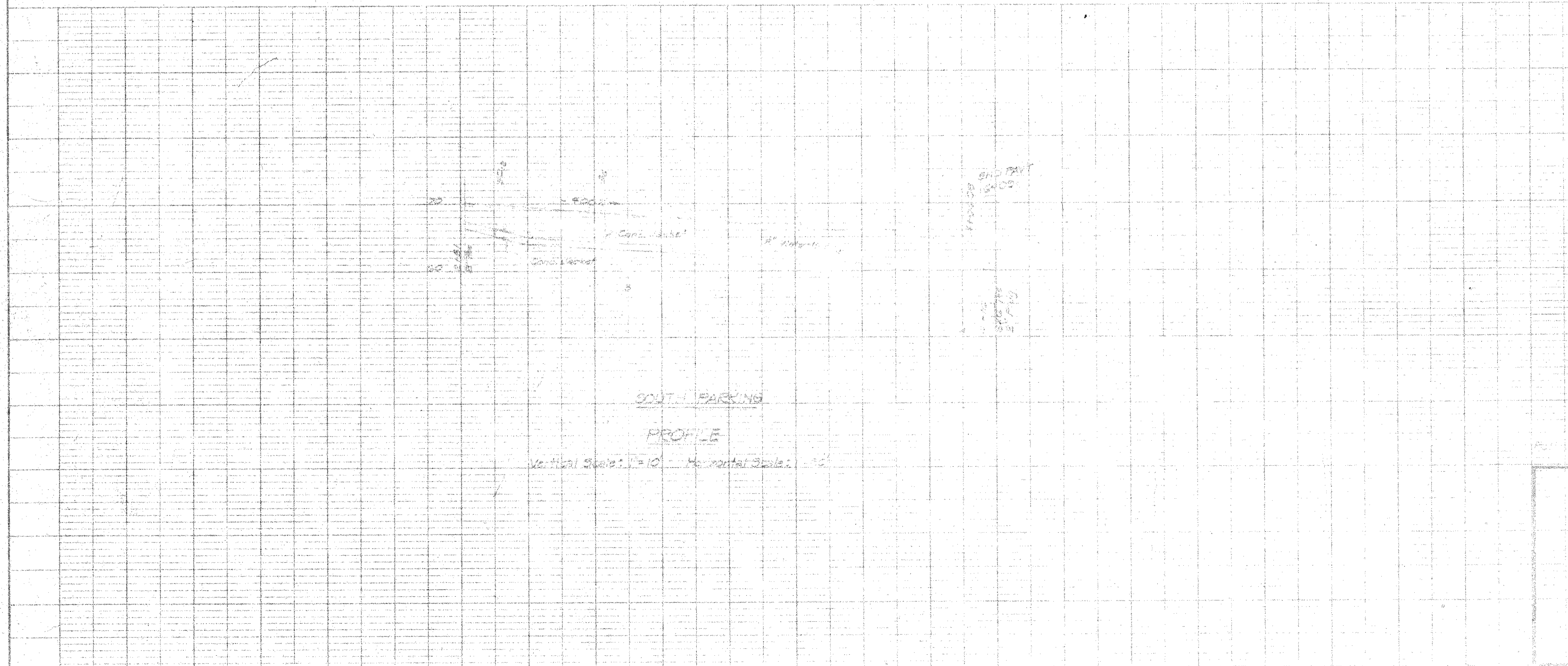
DATE	
BY	
NO.	
PLANNED	
NOTED	
NO.	
PLANNED	
NOTED	
NO.	



FIRE HYDRANT CONNECTION
MATERIAL LIST

- 1 - 6x6 Tee
- 1 - 6" Gate Valve
- 1 - Sliding Valve Box & Cover
- 1 - Fire Hydrant Assembly (Riv. Valve Co. Model No. 5)
- 2 - Conc. Blocks
- 6" Pipe as required

DATE	
BY	
NO.	
PLANNED	
NOTED	
NO.	
PLANNED	
NOTED	
NO.	



Paul K. Johnson 8/25/17
THIS WORK WAS PREPARED BY
ME OR UNDER MY SUPERVISION.

WALFA ERANE
PHASE 2 WATERLINE