

ENTRANCE MARKER LOCATION

SALES BLDG (SEE RQ #2, EKAHI 1)

NOTE THAT GRADING FOR BLDG #19 IS INCLUDED IN RQ #1, EKAHI 1

EKAHI 2 INCREMENT #1 (NOTE INCLUDES GRADING AND SITE UTILITIES FOR INCREMENT #2)

EKAHI 2 INCREMENT #2

EKAHI 2 INCREMENT #3

EKAHI 1 (UNDER CONSTRUCTION)

EKAHI 2 INCREMENT #4

WALEA SITE 52 MAP
1" = 100'

KEY
59 ← BLDG NUMBER 50
2B-R ← BLDG TYPE 2B-REVERSE

INCREMENT NO. 1

UNIT TYPE	TOTAL 10 BLDGS										TOTAL UNITS
	2 BLDGS		3 BLDGS		3 BLDGS		1 BLDG		10 BLDGS		
	EA	TOTAL	EA	TOTAL	EA	TOTAL	EA	TOTAL	EA	TOTAL	
S			2	6							6
1-1			2	6			2	6			12
1-2A	2	4					2	6	2	2	14
1-2B							2	6	2	2	10
1-2T											
2-2	2	4							2	2	
2-2 1/2 T			1	3							
TOTAL											

INCREMENT NO. 2

UNIT TYPE	TOTAL 10 BLDGS										TOTAL UNITS
	2 BLDGS		2 BLDGS		1 BLDG		1 BLDG		10 BLDGS		
	EA	TOTAL	EA	TOTAL	EA	TOTAL	EA	TOTAL	EA	TOTAL	
S			2	4							4
1-1			2	4							4
1-2A	2	4					2	2			6
1-2B							2	2			2
1-2T			1	2							2
2-2	2	4							2	2	6
2-2 1/2 T											
TOTAL UNITS											24

INCREMENT NO. 3

UNIT TYPE	TOTAL 11 BLDGS										TOTAL UNITS
	1 BLDG		1 BLDG		2 BLDGS		2 BLDGS		2 BLDGS		
	EA	TOTAL	EA	TOTAL	EA	TOTAL	EA	TOTAL	EA	TOTAL	
S			2	2	2	2					4
1-1			2	2	2	2			2	4	8
1-2A	2	2					2	4	2	4	18
1-2B							2	4	2	4	16
1-2T			1	1			1	2			3
2-2	2	2							2	4	10
2-2 1/2 T					1	1					1
TOTAL UNITS											60

INCREMENT NO. 4

UNIT TYPE	TOTAL 10 BLDGS										TOTAL UNITS
	1 BLDG		1 BLDG		2 BLDGS		4 BLDGS		2 BLDGS		
	EA	TOTAL	EA	TOTAL	EA	TOTAL	EA	TOTAL	EA	TOTAL	
S			2	2	2	4					6
1-1			2	2	2	4			2	8	14
1-2A	2	2					2	8	2	4	14
1-2B							2	8	2	4	12
1-2T			1	1							1
2-2	2	2							2	4	6
2-2 1/2 T					1	2					
TOTAL UNITS											

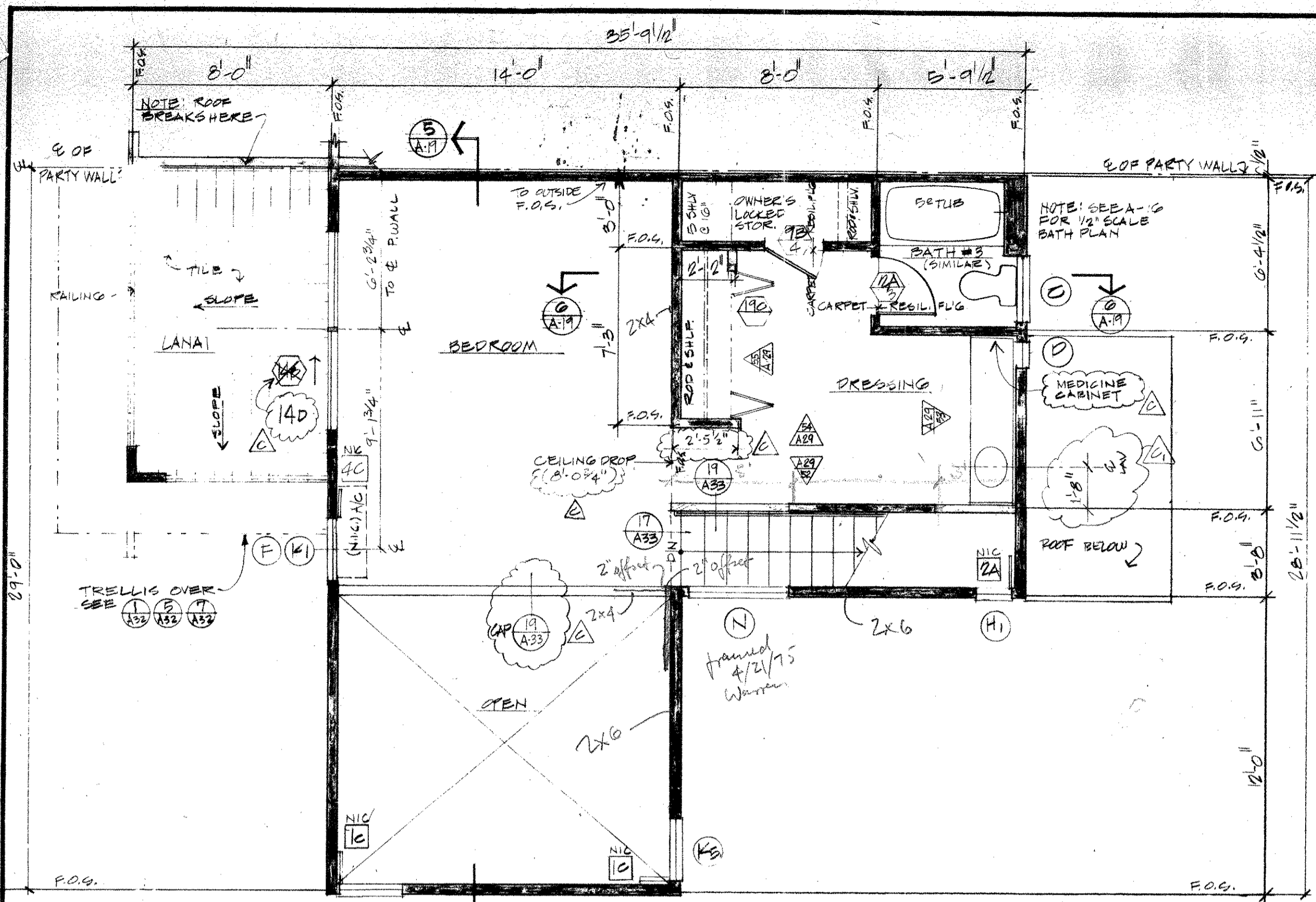
DATE	11/27/74
DESIGNED BY	HANS RIECKE
CHECKED BY	HANS RIECKE
SCALE	AS SHOWN

RECEIVED
NOV 07 1974
HANS RIECKE - ARCHITECT - AIA

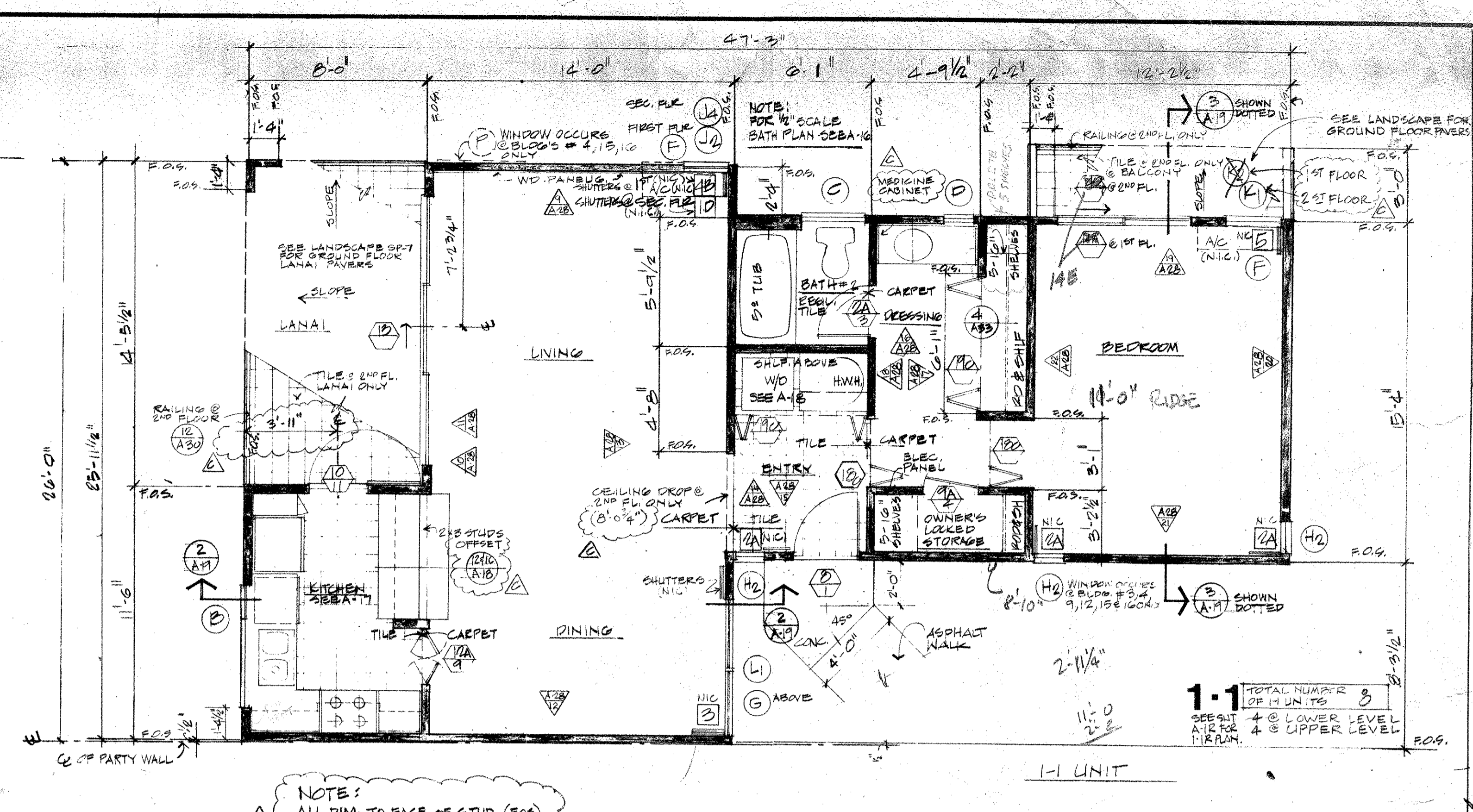
Escherick Homsey Dodge and Davis
Architects and Planners
120 Green Street
San Francisco, California 94111
(415) 421-1924

Hans Riecke, AIA
Architect/Associated
1111 Kalia Road, Honolulu, Hawaii 96732

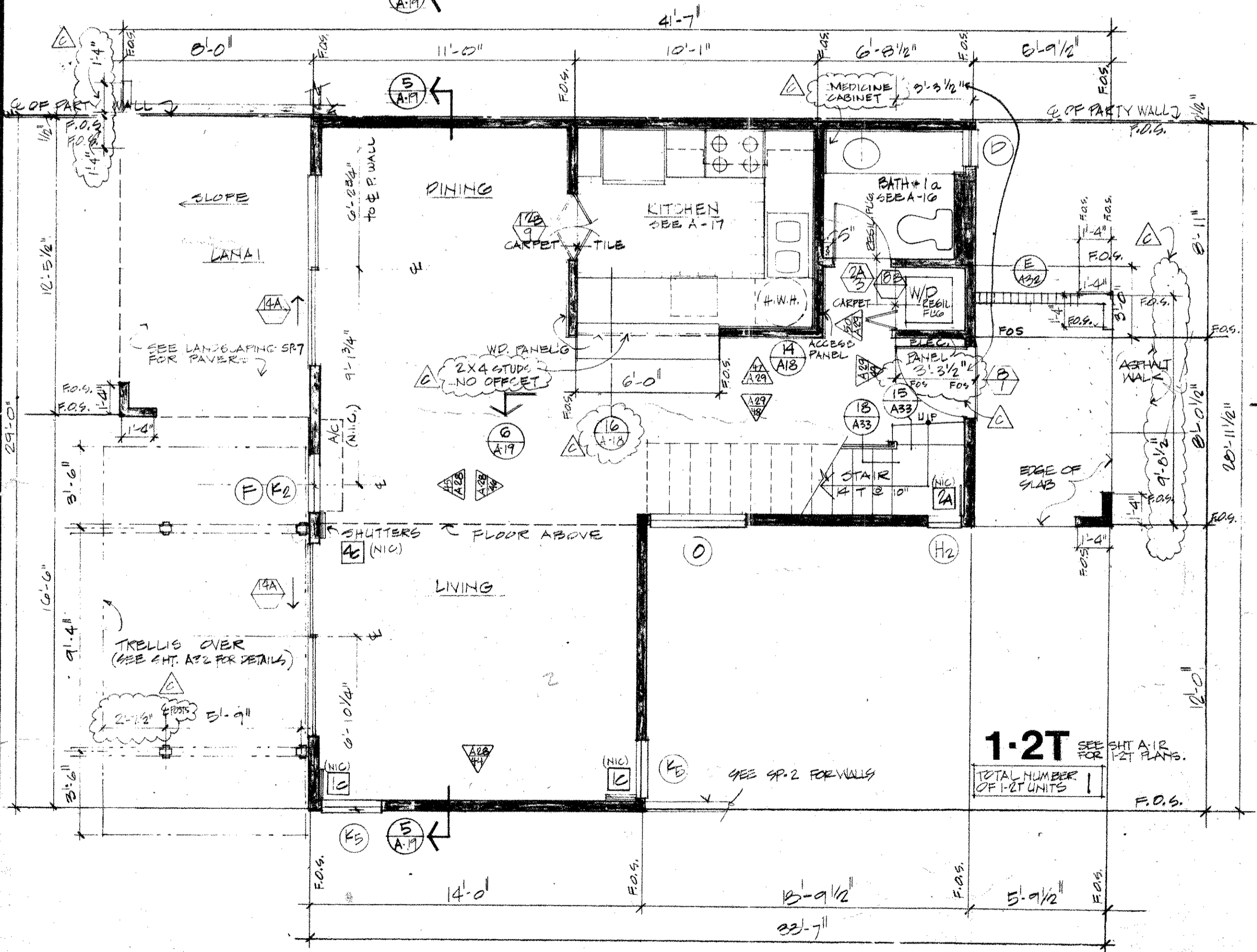
Wailea
EKAHI



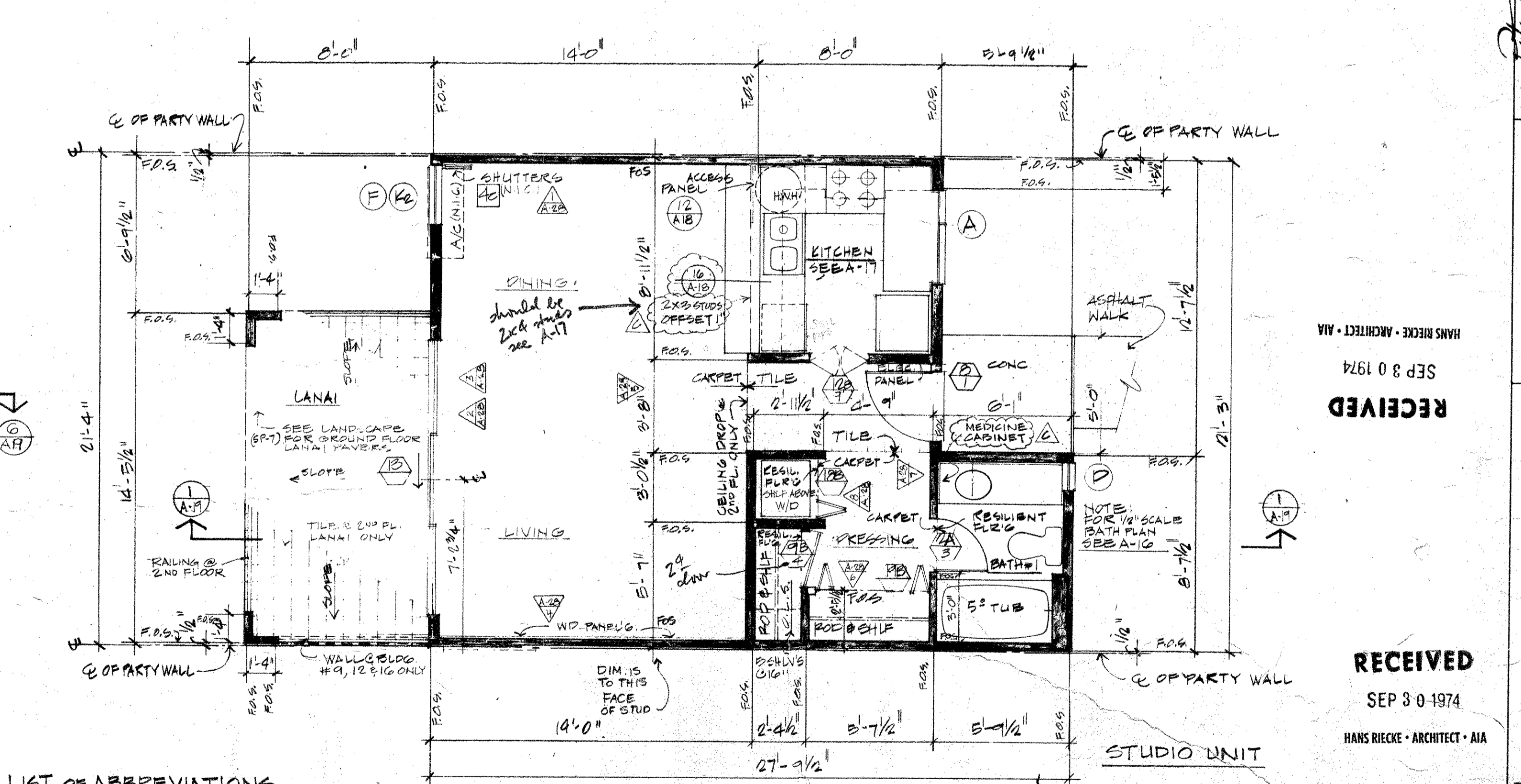
1-2T UNIT - SECOND FLOOR PLAN



1-1 UNIT



1-2T UNIT - FIRST FLOOR PLAN

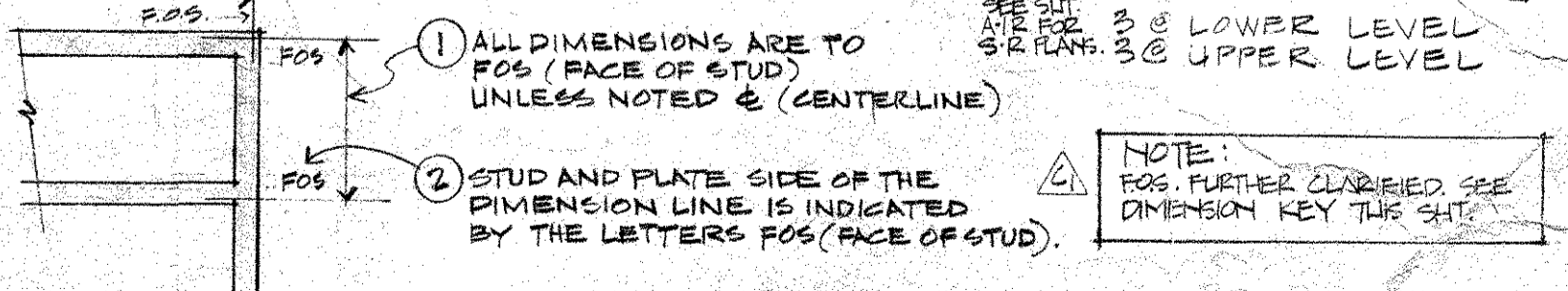


1-1 UNIT

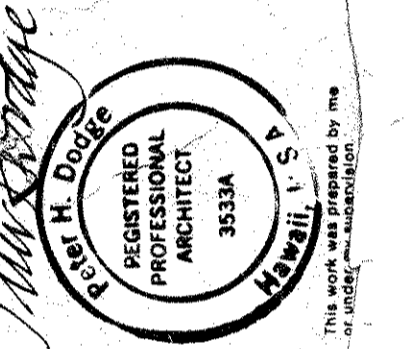
LIST OF ABBREVIATIONS

A/C	AIR CONDITIONER	HGT.	HEIGHT
@	AT EACH ONE AT	HW	HOT WATER HEATER
BLKG.	BLOCKING	MIN.	MINIMUM
C.L.	CENTERLINE	N.I.C.	NOT IN CONTRACT
CLG.	CEILING	O.R.S.	OPPOSITE HAND
CONC.	CONCRETE	O.H.	OPPOSITE
CSK	COUNTERSINK	RES. RESIL.	RESILIENT
E.J.	EXPANSION JOINT	R	REVERSE
F.L. FLR.	FLOOR	SHT.	SHEET
FLG.	FLOORING	SIM.	SIMILAR
F.O.S.	FACE OF STUD	TYR.	TYPICAL
F.E.C.	FIRE EXTINGUISHER CABINET	W/	WITH
GALV.	GALVANIZED	W/D	WASHER/DRYER
GWB.	GYP. WALLBOARD	W.D	WOOD
		W/O	WITHOUT

DIMENSIONING KEY



REVISION	DATE
1	24 APRIL 74
2	24 JULY 74
3	12 APRIL 74



Eshelck Homay Dodge and Davis
Architects and Planners
20 Green Street
San Francisco, California 94111
(415) 421-1924

Hans Riecke, AIA
Architect-Registered
Honolulu, Hawaii 96732

Wailea
KEAWAKAPU BEACH VILLAGE
MAUI, HAWAII
WALEA DEVELOPMENT COMPANY
822 BISHOP ST., HONOLULU, HAWAII 96813

TMK: 2-1-8:Por 42
UNIT PLANS
STUDIO; 1-1
1-2T
SCALE
1/4" = 1'-0"

A-1

RECEIVED
SEP 3 0 1974
HANS RIECKE - ARCHITECT - AIA

RECEIVED
SEP 3 0 1974
HANS RIECKE - ARCHITECT - AIA

9-12

7-11/2

NOTE:
ALL DIM. TO FACE OF STUD (FOS)
UNLESS OTHERWISE NOTED

1-1
TOTAL NUMBER OF STUDS IN THIS UNIT
+ @ LOWER LEVEL
+ @ UPPER LEVEL

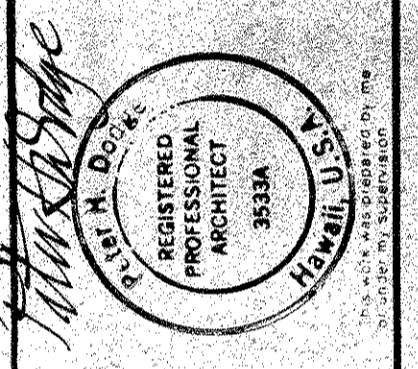
1-2T
TOTAL NUMBER OF 1-2T UNITS

S
TOTAL NUMBER OF STUDS IN THIS UNIT
+ @ LOWER LEVEL
+ @ UPPER LEVEL

NOTE:
FOS, FURTHER CLARIFIED SEE
DIMENSION KEY THIS SHEET.

FINISH SCHEDULE

NOTE:		FLOOR		BASE		WALL		CEILING		REMARKS
		MATERIAL	FINISH	MATERIAL	FINISH	MATERIAL	FINISH	MATERIAL	FINISH	
KEY 1 = SEMI-GLOSS 2 = FLAT	RESIDENTIAL UNITS	TYPICAL LIVING ROOM	•		•		•		•	* SEE 1/4" PLANS FOR EXTENT. ** AT 2 1/2" CAB. TOE SPACE - SEE 9/A '83
		TYPICAL DINING ROOM	•				•		•	* SEE A-17 FOR CABINET MILLWORK
		TYPICAL KITCHEN *	•		•		•		•	
		TYPICAL BEDROOM #1	•				•		•	
		TYPICAL BEDROOM #2	•				•		•	
		TYPICAL DRESSING AREA	•				•		•	
		TYPICAL BATH	•		•		•		•	* SEE A-16 FOR EXTENT
		TYPICAL ENTRY	•		•		•		•	* SEE 1/4" PLANS FOR EXTENT
		TYPICAL HALL	•				•		•	
		TYPICAL CLOSET	•				•		•	
		TYPICAL WASHER DRYER CLOSET	•		•		•		•	
		TYPICAL LOCKED STORAGE	•		•		•		•	
		2-2 ST STAIRWAY *	•				•		•	* SEE SHEET A-32 FOR MILLWORK
		1-2 ST STAIRWAY *	•				•		•	* SEE SHEET A-32 FOR MILLWORK
										SEE PAINT FINISH KEY AT LEFT
	SALE & RECEPTION CENTER	CONFERENCE			•		•		•	
		SALES DISPLAY			•		•		•	
		VESTIBULE 1			•		•		•	
		WORK OFFICE	•				•		•	
		SECRETARY	•				•		•	
		OFFICE #1 THRU 4	•				•		•	
		VESTIBULE 2			•		•		•	
		KITCHEN	•		•		•		•	
		MEN	•		•		•		•	
		WOMEN	•		•		•		•	
	LOT									
	UTILITY - CLOSET	•					•		•	
	STORAGE	•					•		•	
	MECHANICAL									
	BEACH CLUB	PAVILION	•		•		•		•	
		PAVILION KITCHEN	•		•		•		•	
		KITCHEN STORAGE	•		•		•		•	
		UTILITY	•		•		•		•	
		MEN	•		•		•		•	
	WOMEN	•		•		•		•		
	POOL & BEACH EQUIPMENT STORAGE	•		•		•		•		
	MAIDS GARBAGE		•		•		•		•	
			•		•		•		•	* PAINT 6'0" HIGH WAINSCOT WITH EPOXY PAINT



Eshbeck Hensley Dodge and Davis
Architects and Planners
San Francisco, California 94111
(415) 421-1924

Hans Ripcke, AIA
Registered Professional Architect
Honolulu, Hawaii 96813

Wailea
KEAWAKAPU BEACH VILLAGE
MAUI, HAWAII
WALEA DEVELOPMENT COMPANY
822 BISHOP ST. HONOLULU, HAWAII 96813

TMK 2-1-8 Per 42
TITLE
FINISH SCHEDULE
SCALE
SHEET
A-13

4-SEPT-74
24-JULY-74
12-APRIL-77

CONSTRUCTION
SCHEDULE
EPOXY PAINT